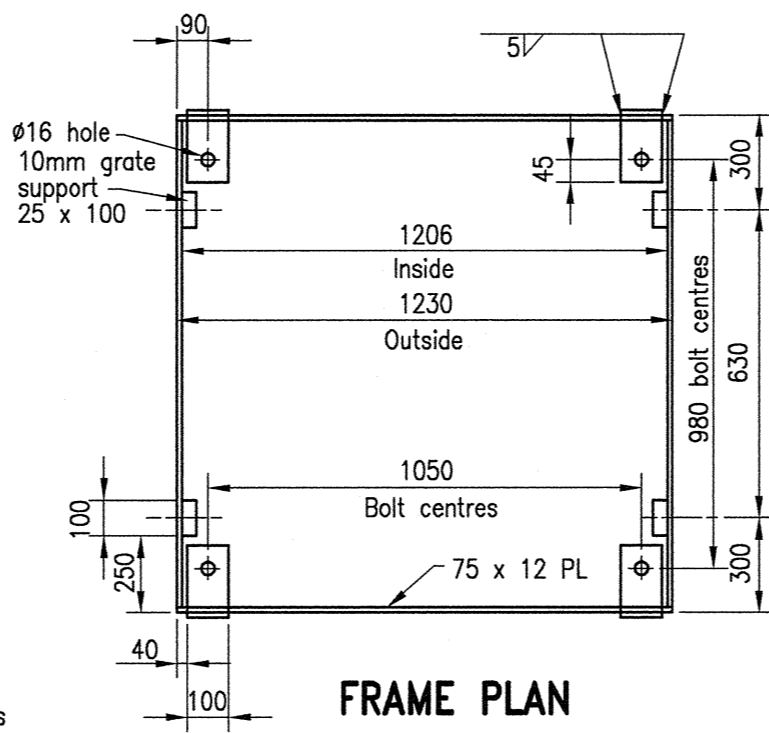
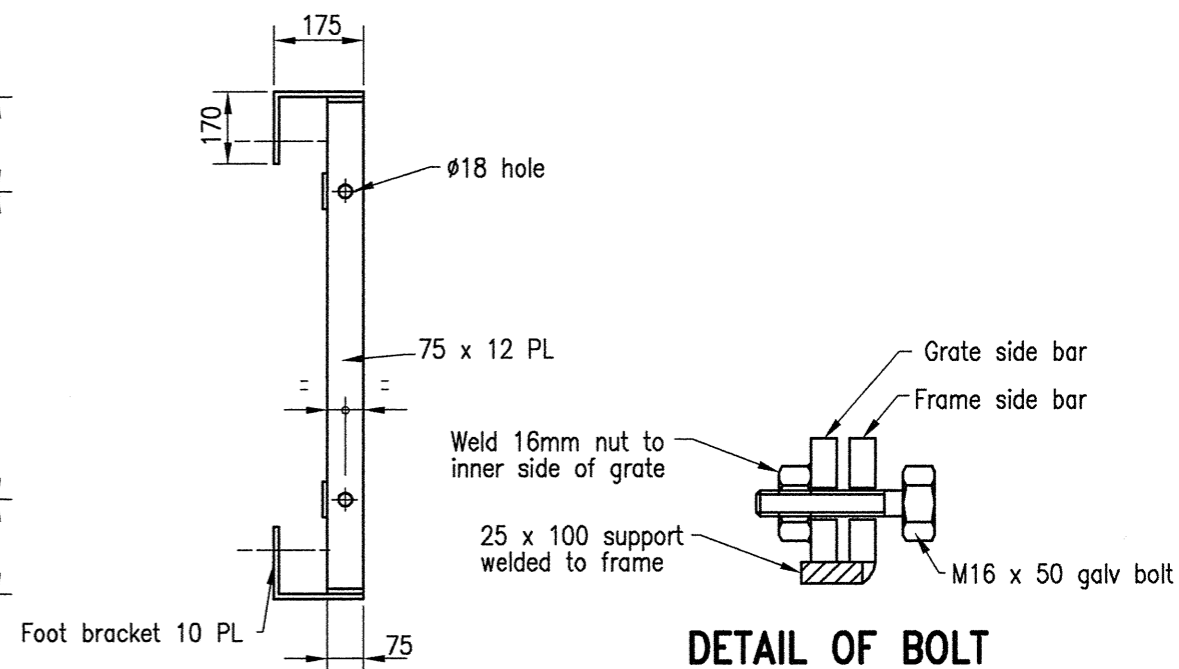


GRATE PLAN

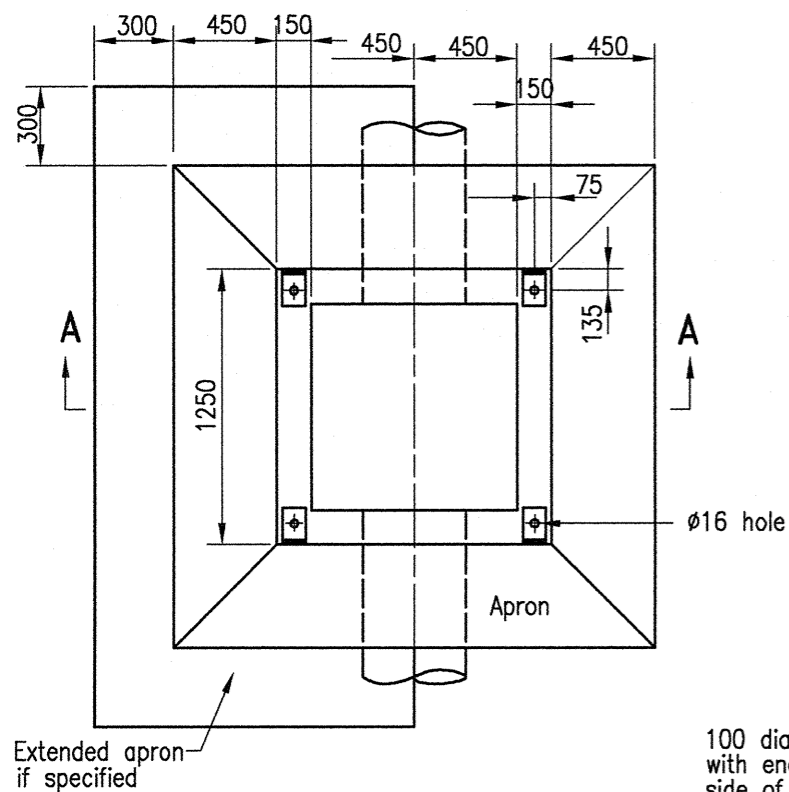


FRAME PLAN



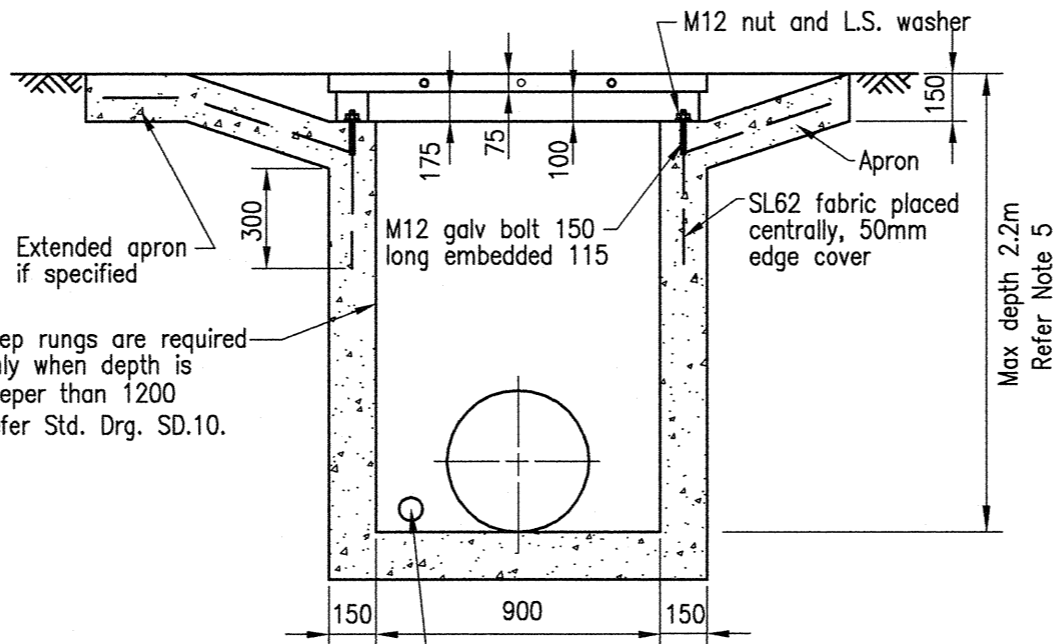
FRAME ELEVATION

DETAIL OF BOLT



PLAN

Grate omitted for clarity



SECTION A-A

100 dia. agg. pipe stub with sock 1000 long with end cap installed on the upstream side of pipe entry (unless directed otherwise). The stub is required to dewater the pipe trench.

Step rungs are required only when depth is deeper than 1200 Refer Std. Drg. SD.10.

NOTES

- Concrete class to be N32/20
- Structural concrete to AS 1379 and AS 3600
- Live load surcharge, earth pressure and ultimate load factors are in accordance with Australian Bridge Design Code.
- Cover to reinforcing steel in pit to be 40mm unless shown otherwise, Exposure classification B1. Reinforcing steel to be Australian made Grade 400Y to AS 4671. Reinforcing mesh to AS 4671.
- Pits up to a depth of 2.2 metres do not require steel reinforcement. One layer of SL81 mesh is to be placed centrally in the walls for pit depths 2.2 to 3.0 metres.
- Grates and frames shall comply with the requirements of AS 3996 Class C design. Grates detailed are to be used where cyclists are excluded. Where safe bicycle grates are required, only approved grates and frames are to be used. Bicycle safety testing of grates shall be in accordance with AS 3996.
- Face of frames on which grates sit shall be true.
- Steel to be Grade 250 to AS/NZS 3678 and AS/NZS 3679.1
- All steelwork to have weld splatter and welding slag removed prior to hot dip galvanising to AS/NZS 4680.
- Welding symbols are to AS 1101.3. Welding to be to AS/NZS 1554.1. Welding consumables to be E48XX or W50X
- Hexagonal head bolts to AS 1111. Nuts to AS 1112. Washers to AS 1237. Galvanised to AS 1214 and AS 4680.
- Dimensions are in millimetres unless shown otherwise.

TYPE 1 FIELD INLET

REVISIONS					
AMENDMENT	INITIALS	DATE	AMENDMENT	INITIALS	DATE
F				L	
E				K	
D				J	
C				I	
B				H	
A				G	

IPSWICH CITY COUNCIL
 45 Roderick St
 P.O. Box 191
 Ipswich QLD 4305
 Australia

Tel (07) 3810 7894
 Tel (07) 3810 7927
 Fax (07) 3810 7950

APPROVED

 CHIEF OPERATING OFFICER (ES)
 DATE 14.9.10

STANDARD DRAWING
STANDARD FIELD INLET AND OVERFLOW PIT
TYPE 1

DRAINAGE
SD.08
 REV: B DRAWER: 100