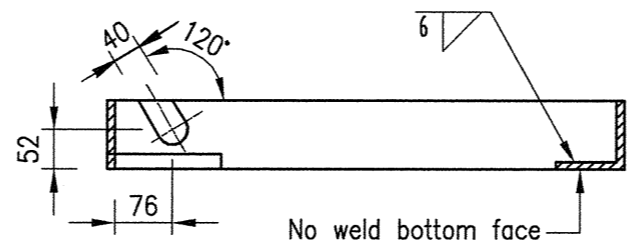
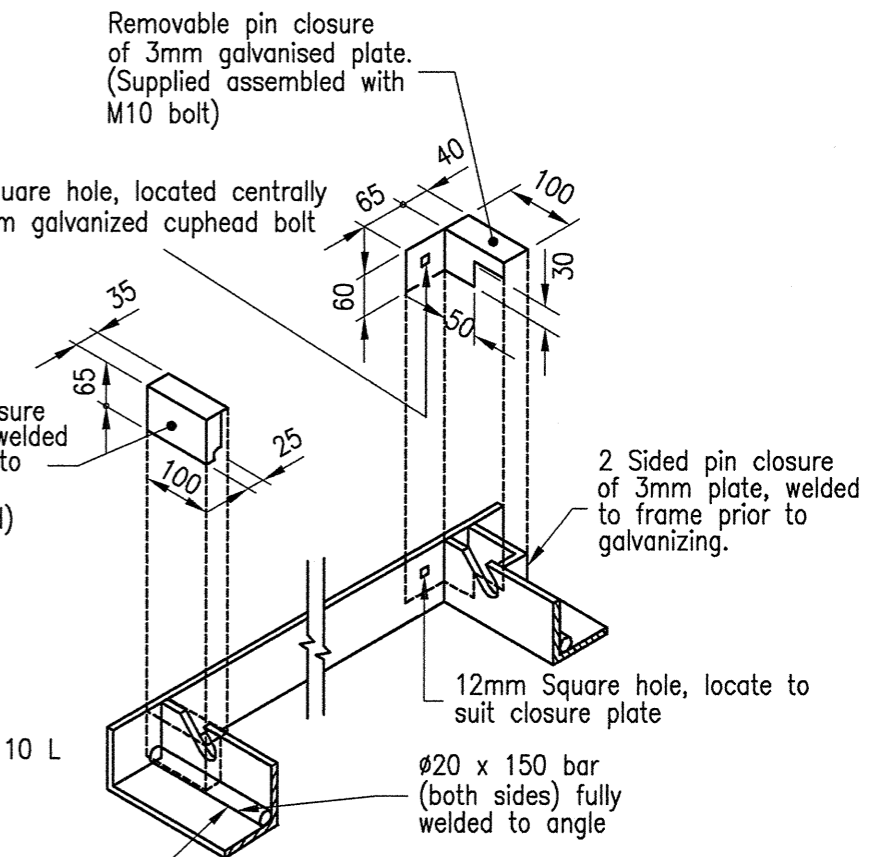


SECTION B-B

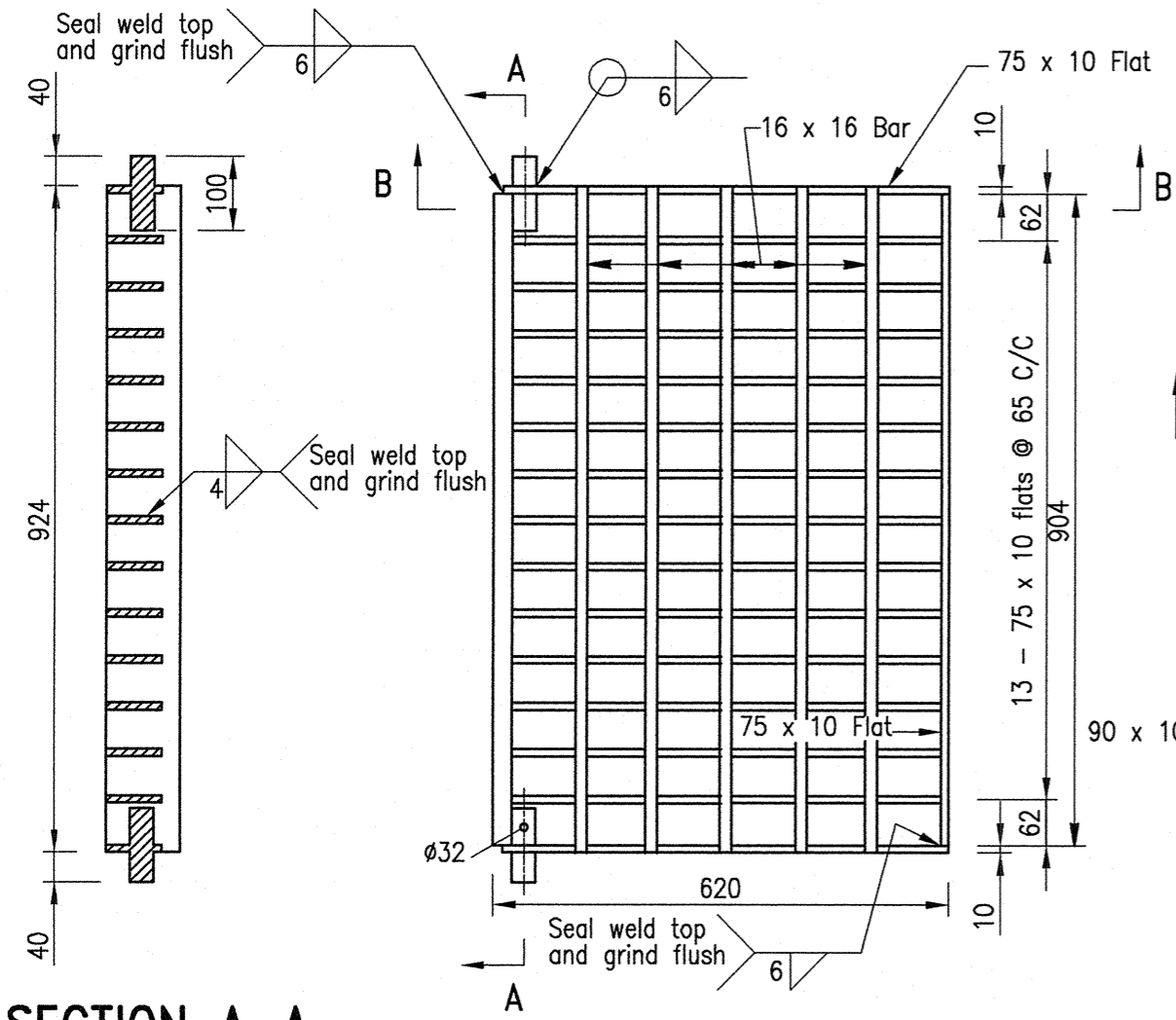


SECTION C-C



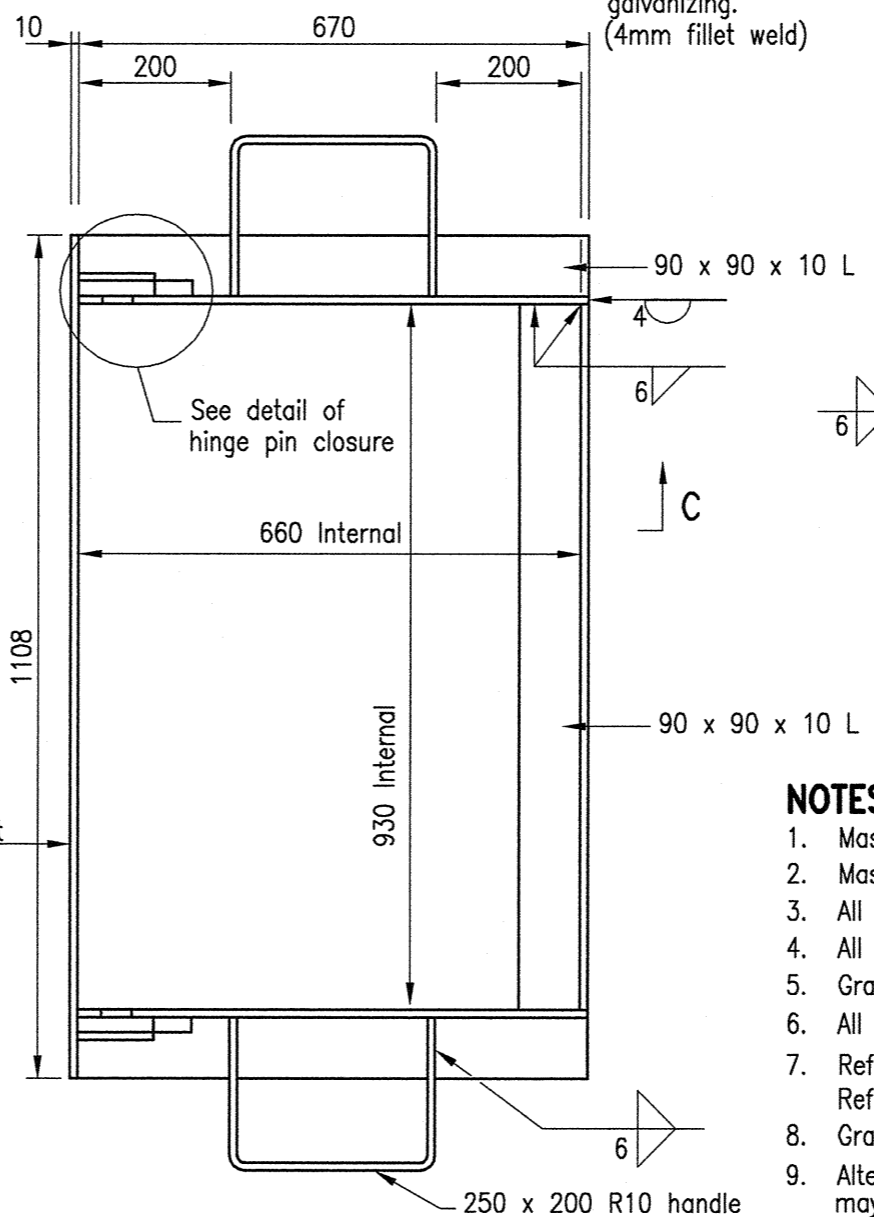
TYPICAL DETAIL OF HINGE PIN CLOSURES

A locking device shall be provided in accordance with clause 3.2.1.4 of AS 3996. Grate needs to be held open at least 90° open



SECTION A-A

PLAN OF GRATE



PLAN OF FRAME

NOTES

1. Mass of grate = 85 kg.
2. Mass of frame = 39 kg.
3. All steel flats Grade 250 to AS 3678.
4. All steel bars and angles Grade 250 to AS 3679.
5. Grate and frame to be hot dip galvanized, after fabrication to AS 4680.
6. All welds to AS 1554. Welding symbols to AS 1101.3.
7. Refer Standard Drawings SR.04 and SR.05 for gully details. Refer Standard Drawing SR.06 for precast lintel details.
8. Grate and frame Class D to AS 3996.
9. Alternative fabricated steel grate and frame, Grade 250 to AS 3679, may be used when approved by Council's Engineer.
10. Grate to open at an angle of 90° or greater.
11. All Dimensions in millimetres.

REVISIONS					
AMENDMENT	INITIALS	DATE	AMENDMENT	INITIALS	DATE
F				L	
E				K	
D				J	
C				I	
B				H	
A				G	

IPSWICH CITY COUNCIL
 45 Roderick St
 P.O. Box 191
 Ipswich QLD 4305
 Australia

Tel (07) 3810 7894
 Tel (07) 3810 7927
 Fax (07) 3810 7950

APPROVED
[Signature]
 CHIEF OPERATING OFFICER (ES)
 DATE 14-9-10

STANDARD DRAWING
 STANDARD GRATED INLET PIT
 GRATE AND FRAME

SD.07
 REV: B DRAWER: 100