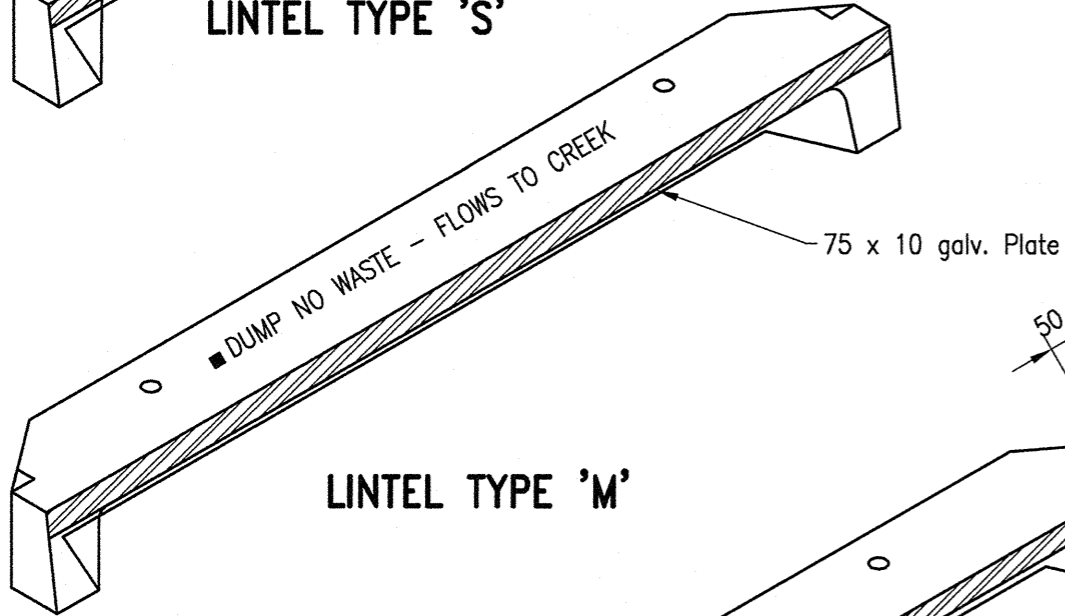
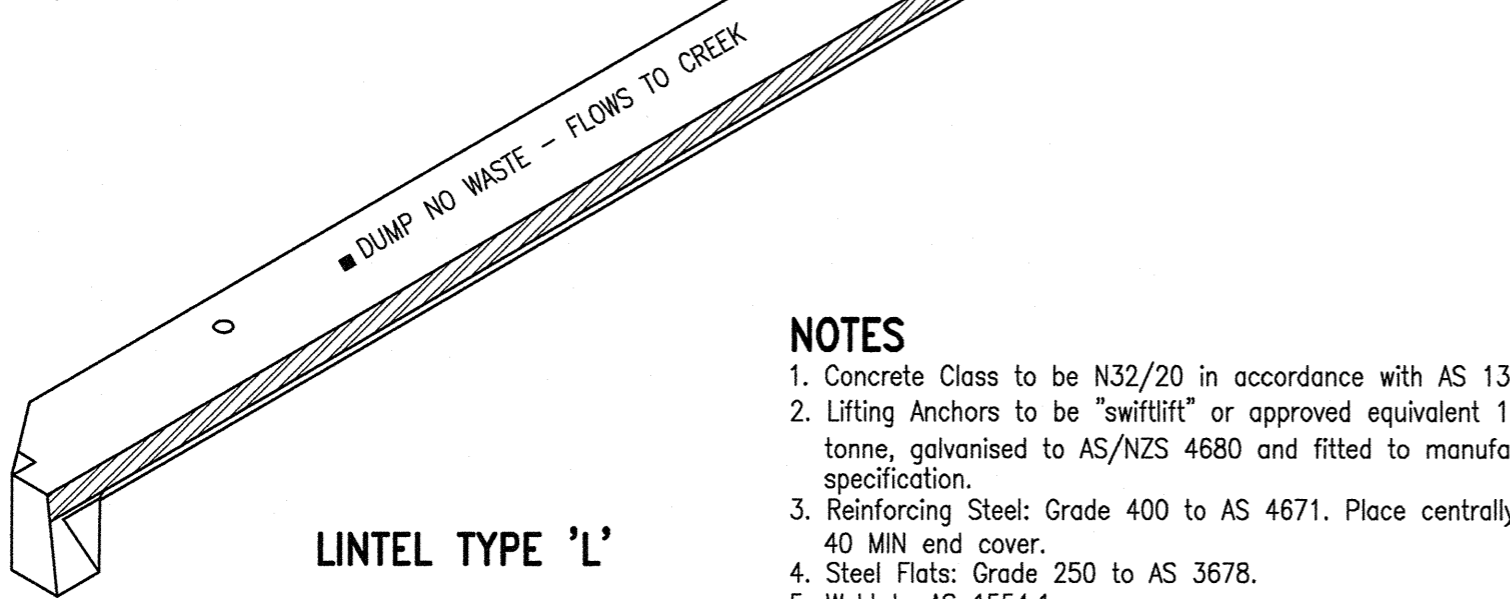


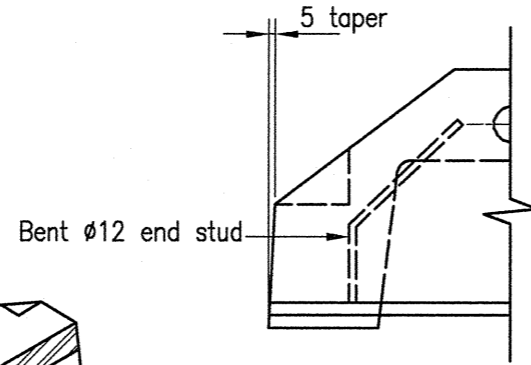
LINTEL TYPE 'S'



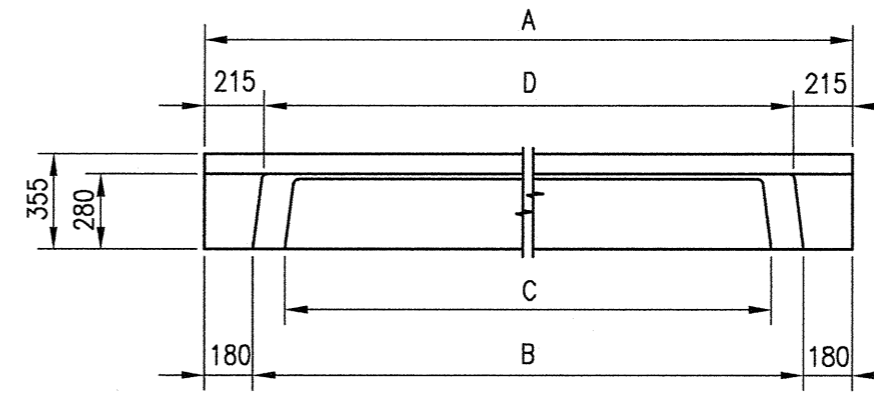
LINTEL TYPE 'M'



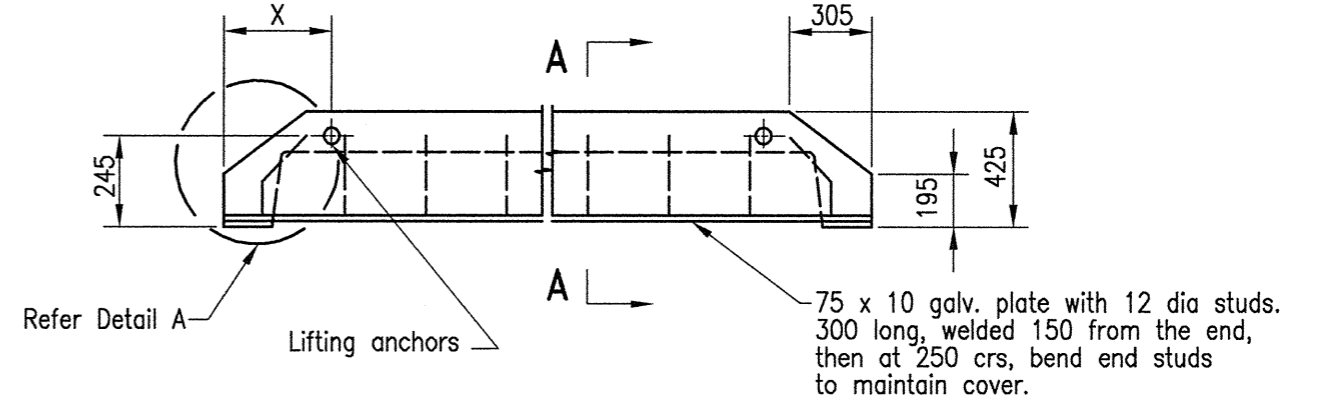
LINTEL TYPE 'L'



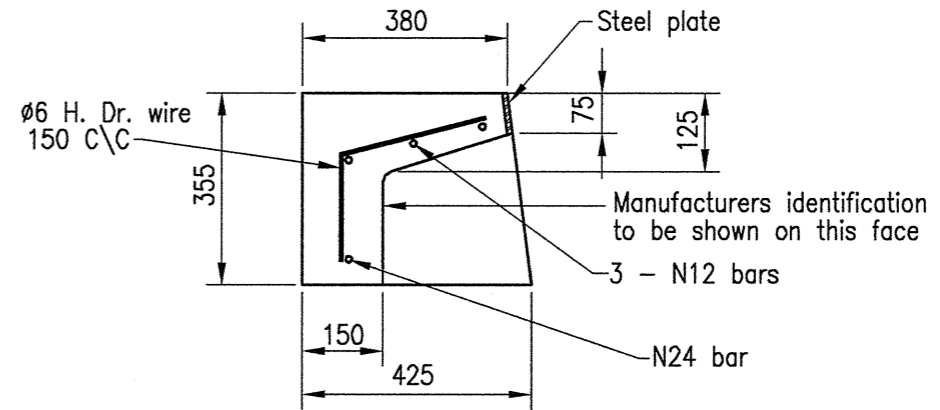
DETAIL A



ELEVATION



PLAN



SECTION A-A

**NOTES**

1. Concrete Class to be N32/20 in accordance with AS 1379 and AS 3600.
2. Lifting Anchors to be "swiftlift" or approved equivalent 1.3 tonne, galvanised to AS/NZS 4680 and fitted to manufacturer's specification.
3. Reinforcing Steel: Grade 400 to AS 4671. Place centrally, 40 MIN end cover.
4. Steel Flats: Grade 250 to AS 3678.
5. Weld to AS 1554.1.
6. Hard Drawn Wire to AS 4671.
7. Steel Plate hot dip galvanised to AS/NZS 4680.
8. All Dimensions in millimetres.
9. 12ø Studs, Grade 250 Steel AS 3679, Galvanised to AS 4680

**LEGEND**

■ Text 40mm high letters imprinted 5mm into concrete.

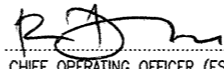
**TABLE**

LINTEL	A	B	C	D	X	MASS (kg)
S	2400	2040	1800	1970	400	445
M	3600	3240	3000	3170	690	550
L	4800	4440	4200	4370	1000	725

REVISIONS					
AMENDMENT	INITIALS	DATE	AMENDMENT	INITIALS	DATE
F				L	
E				K	
D				J	
C				I	
B				H	
A				G	

**IPSWICH CITY COUNCIL**  
 45 Roderick St  
 P.O. Box 191  
 Ipswich QLD 4305  
 Australia

Tel (07) 3810 7894  
 Tel (07) 3810 7927  
 Fax (07) 3810 7950

APPROVED  
  
 CHIEF OPERATING OFFICER (ES)  
 DATE 14-9-10

**STANDARD DRAWING**

STANDARD GRATED INLET PIT  
 PRECAST LINTEL DETAILS

DRAINAGE

**SD.06**

REV: B DRAWER: 100