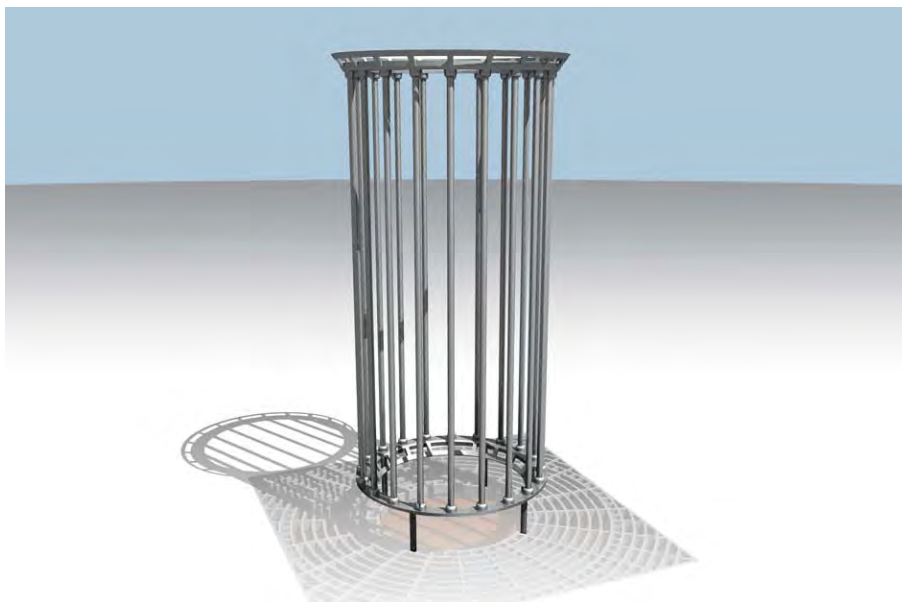


## Appendix F - Tree Guard

### Tree Guard

Product:	TG6
Supplier:	Street Furniture Australia (or approved equivalent other)
Materials:	Rims – decorative cast aluminium, Posts- Dot dip galv mild steel
Finishes:	Mild steel or two-pack paint finish - Dulux Citi Pearl 88471 Matt
Fixings:	bolt fix with 'integrate' system to tree gate refer Appendix F
Note:	Tree guard to be installed to achieve vertical level, regardless of footpath grade.





street furniture  
AUSTRALIA

[company](#)
[products](#)
[tools+](#)
[projects](#)
[custom](#)
[e-shop](#)
[contact](#)
[back to menu](#)
[product page](#)
[print page](#)

#### TOOLS

[image library](#)
[request cad](#)
[online enquiry](#)

#### PDF

[technical sheet](#)
[brochure](#)
[maintenance](#)

## treeguard tg6

### General Description

Stylish tree guard constructed from cast aluminium rims and high-strength steel posts. Supplied in halves and bolted together on-site for ease of installation. Can be installed directly into ground, or integrated with matching SFA grate.

### Specifications:

#### TREE PROTECTION TYPE:

- TG6

#### DIMENSIONS:

- Outside dia = 725mm
- Min. dia = 505mm

#### HEIGHT OPTIONS:

- 1395mm (Standard)
- Custom

#### CONSTRUCTION:

- Rims - decorative cast aluminium
- Posts - HDG mild steel

#### FINISH OPTIONS:

- Powdercoat (Black, Heritage Green, Silver)

*Non standard colours incur set up fee and lead time*

#### MOUNTING OPTIONS:

- Sub-surface, push-fit installation
- Bolt fixed with 'integrate' system

*Some options may incur extra cost*

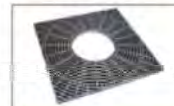
*SFA recommends downloading the technical sheet (.pdf) from the left tool bar.*



[ TG6 Treeguard ]



#### RELATED PRODUCTS



square treegrate



round treegrate

### General Description

Stylish tree guard constructed from cast aluminium rims and high-strength steel posts. Supplied in halves and bolted together on-site for ease of installation. Can be installed directly into ground, or integrated with matching SFA grate.

### Specification

TREEGUARD TYPE:  
TG6

#### DIMENSIONS:

Outside dia = 725mm

Min. Internal dia = 505mm

Option -

☐ Standard Height 1395mm

☐ Specified Height

#### CONSTRUCTION:

Rims - decorative cast aluminium

Posts - HDG mild steel

#### FINISH OPTIONS (IF REQUIRED):

Powdercoat (standard)

☐ Black

☐ Heritage Green

☐ Silver

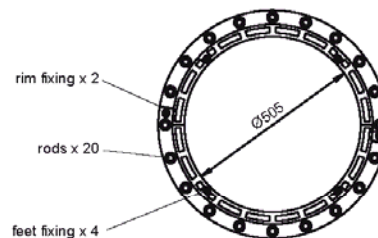
*Non standard colours incur set up fee and lead time*

#### MOUNTING OPTIONS:

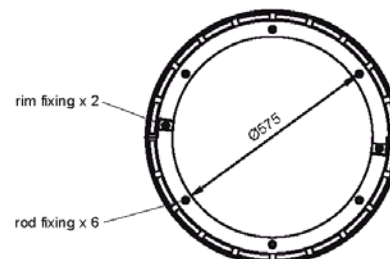
☐ Sub-surface, push-fit installation

☐ Bolt fixed with 'integrate' system

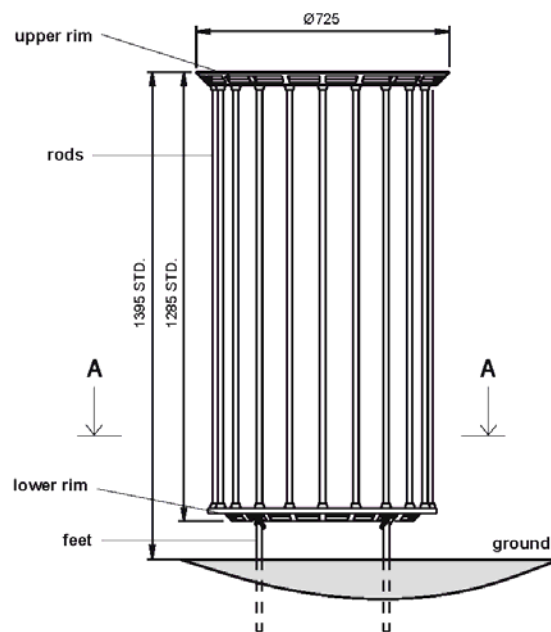
*Some options may incur extra cost*



SECTION A - A  
LOWER RIM



PLAN  
UPPER RIM



FRONT ELEVATION



T 61-2 9310 1488 | F 61-2 9318 1343  
www.streetfurniture.com

© SFA 2007

Please note that by using this drawing in any format, you are accepting that SFA owns the copyright. You are licensed to use this drawing for any furniture on which SFA are tendering, and you shall not knowingly allow others to copy this drawing. Obtain appropriate licences from SFA if you (or anyone employed or engaged by you) intend to use the intellectual property rights of SFA in performing your obligations under any contract.

SFA reserves the right to amend specifications without notice for product improvement.

## Appendix G - Drinking Fountain

### Drinking Fountain

Product:	CCC001
Supplier:	Street & Garden Furniture Co. (or approved equivalent other)
Materials:	Stainless steel body, water dish, handle and bubbler mechanism.
Finishes:	Polished stainless steel
Fixings:	In-ground rag bolt assembly or 4 x M10 dyna bolts/socket screws, refer to supplier specification








### CCCoo1

Related items: [Fountains](#)

**Materials**  
Stainless steel body, water dish, handle and bubbler mechanism.

**Colours**  
Polished and matt stainless steel finishes available. All powder coat colours in the Dulux range are also available.

**Fixings**  
In-ground rag bolt assembly or 4 X M10 dyna bolts / socket screws. Fixing Details in the Fixing Menu – Type 6 (Plumbing installation details also available).

**Contact**

Contact Name

Company

Contact Number

Contact E-Mail

Message

« UQ005A

DL5006 »

LEGAL	CONTACT
<p>© Street &amp; Garden Furniture Co.</p> <p>No part of this website may be reproduced or reused for any commercial purposes whatsoever without written permission from Street &amp; Garden Furniture Co.</p>	<p>PO Box 3662 South Brisbane Q 4101</p> <p>Ph +61 7 3844 1951 Fax +61 7 3844 9337 Email <a href="mailto:sales@streetandgarden.com.au">sales@streetandgarden.com.au</a></p> <p>Subscribe via <a href="#">RSS</a> for the latest on products, projects and events.</p>

## Appendix H - Bicycle Rack

### Bicycle Rack

Product:	BST04 - Spiral Hoop Refer to Appendix D
Supplier:	Street Furniture Australia (or approved equivalent other)
Materials:	Refer to Appendix D
Finishes:	Mild steel or two-pack paint finish - Dulux Citi Pearl 88471 Matt
Fixings:	surface fixing





**street furniture**  
AUSTRALIA

[company](#)
[products](#)
[tools+](#)
[projects](#)
[custom](#)
[e-shop](#)
[contact](#)
[back to menu](#)
[product page](#)
[print page](#)

#### TOOLS

[image library](#)
[request cad](#)
[online enquiry](#)

#### PDF

[technical sheet](#)
[brochure](#)
[maintenance](#)

## spiral hoop

### General Description

A contemporary styled double-sided bicycle stand that provides superior support for the entire bicycle.

#### Features:

- \* Graceful appearance
- \* Side by side placement creates an illusion of a continuous helix
- \* High security
- \* U-lock compatible
- \* Allows both wheels and frame to lock
- \* One unit parks two bicycles
- \* Easy installation
- \* Conforms to AS 2890.3 Class 3



### Specifications

#### BICYCLE STAND TYPE:

- BST04 - Spiral Hoop

#### DIMENSIONS:

- BST04 - 720mm (w) x 850 / 875mm (h) x 275mm (d), 42mm dia pipe

#### PIPE MATERIAL:

- HDG Mild Steel
- Stainless Steel

#### MOUNTING OPTIONS:

- Surface fixing
- Sub-surface fixing w/ baseplate
- Sub-surface fixing cast in concrete

*Some options may incur extra cost*

*SFA recommends downloading the technical sheet (.pdf) from the left tool bar.*

[ BST04 - Spiral Hoop ]





## spiral-hoop stand

BST 04

v3.07 | September 07

## General Description

A contemporary styled double-sided bicycle stand that provides superior support for the entire bicycle.

## Features:

- \* Graceful appearance
- \* Side by side placement creates an illusion of a continuous helix
- \* High security
- \* U-lock compatible
- \* Allows both wheels and frame to lock
- \* One unit parks two bicycles
- \* Easy installation
- \* Conforms to AS 2890.3 Class 3

## Specification

SPIRAL HOOP BICYCLE STAND:  
BST04

## DIMENSIONS:

725mm (w) x 850 / 875mm (h) x  
275mm (d), 42mm dia pipe

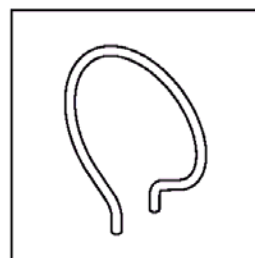
## PIPE MATERIAL:

- ☐ HDG Steel
- ☐ Stainless Steel

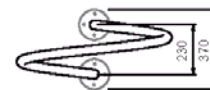
## MOUNTING OPTIONS:

- ☐ Sub-surface fixing w/ base plate
- ☐ Sub-surface fixing w/ base casting
- ☐ Sub-surface fixing cast in concrete

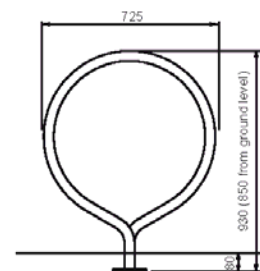
*Some options may incur extra cost*



w/ sub-surface base plate  
PERSPECTIVE



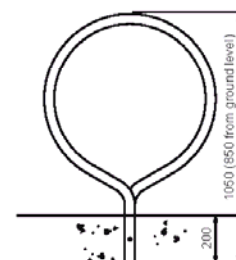
PLAN



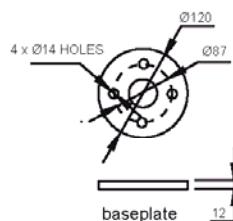
w/ base plate  
FRONT ELEVATION



w/ bike



Cast in concrete  
FRONT ELEVATION



© SFA 2007

Please note that by using this drawing in any format, you are accepting that SFA owns the copyright. You are licensed to use this drawing for any furniture on which SFA are tendering, and you shall not knowingly allow others to copy this drawing. Obtain appropriate licences from SFA if you (or anyone employed or engaged by you) intend to use the intellectual property rights of SFA in performing your obligations under any contract.

SFA reserves the right to amend specifications without notice for product improvement.

**SFA**

T 61-2 9310 1488 | F 61-2 9318 1343  
www.streetfurniture.com



## Appendix I - Bollard

### Bollard

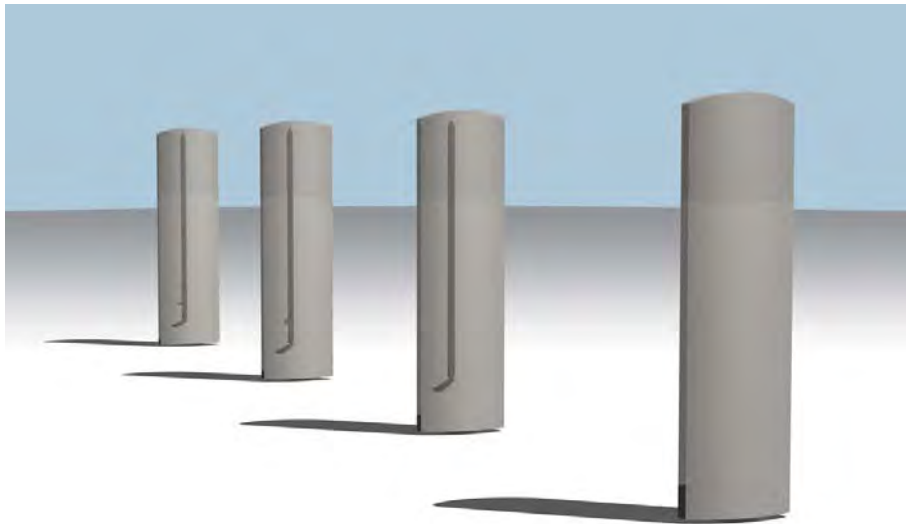
Product: Bollard

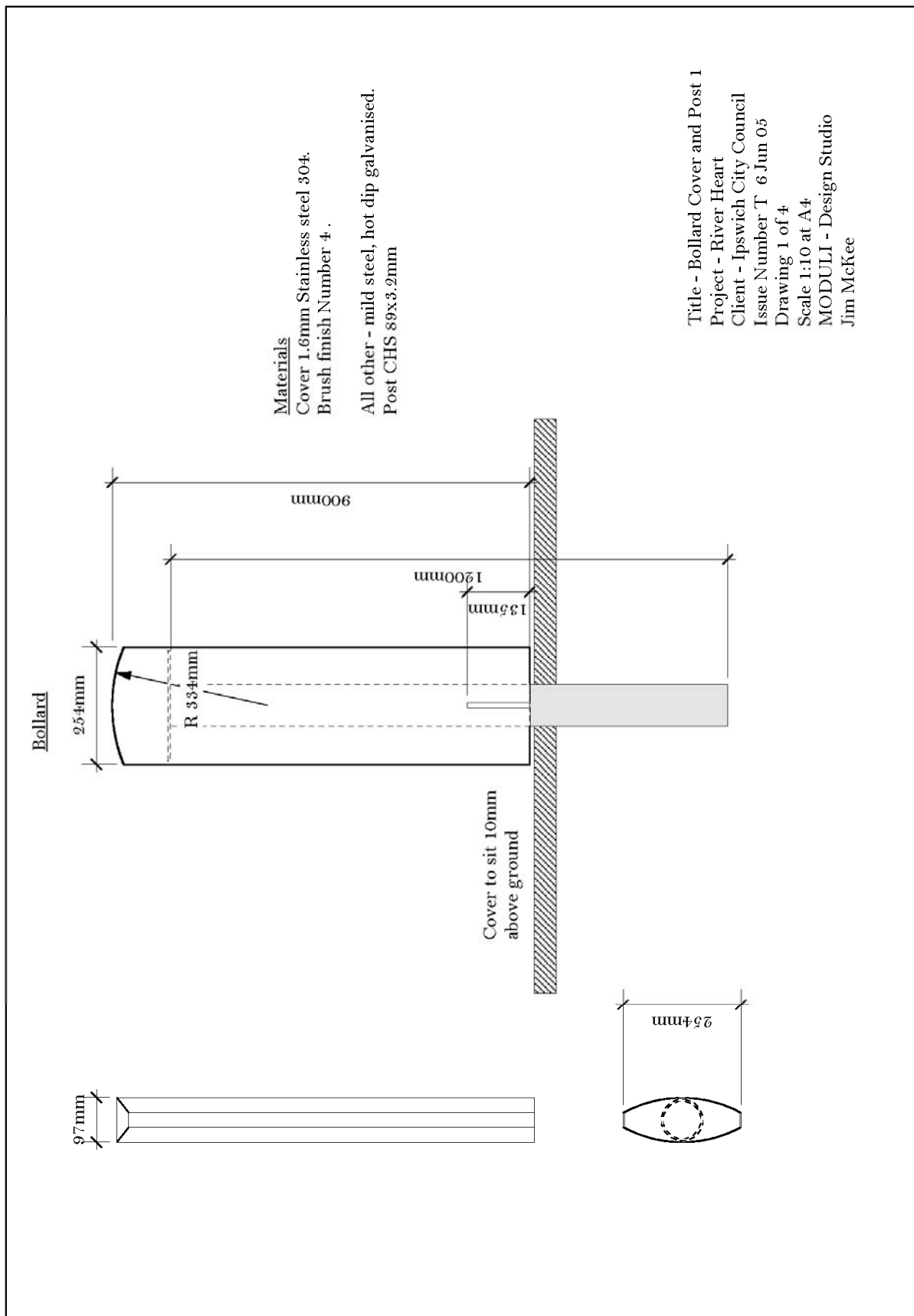
Supplier: Fabrication by fabricator of client/  
applicants selection and/or Hub  
Street Equipment.  
(or approved equivalent other)

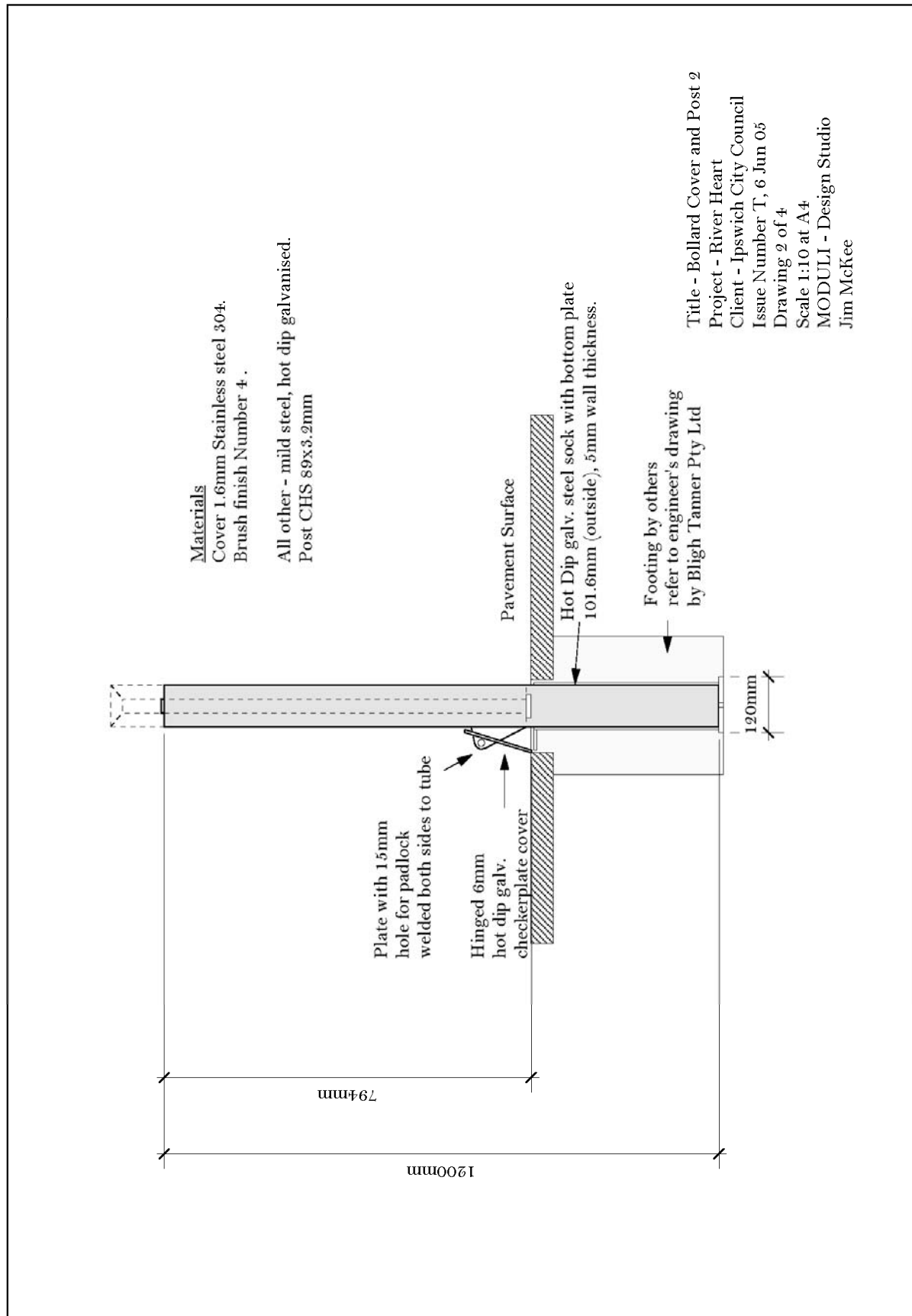
Materials: Frame – hot dip galv mild steel, Cover – stainless steel

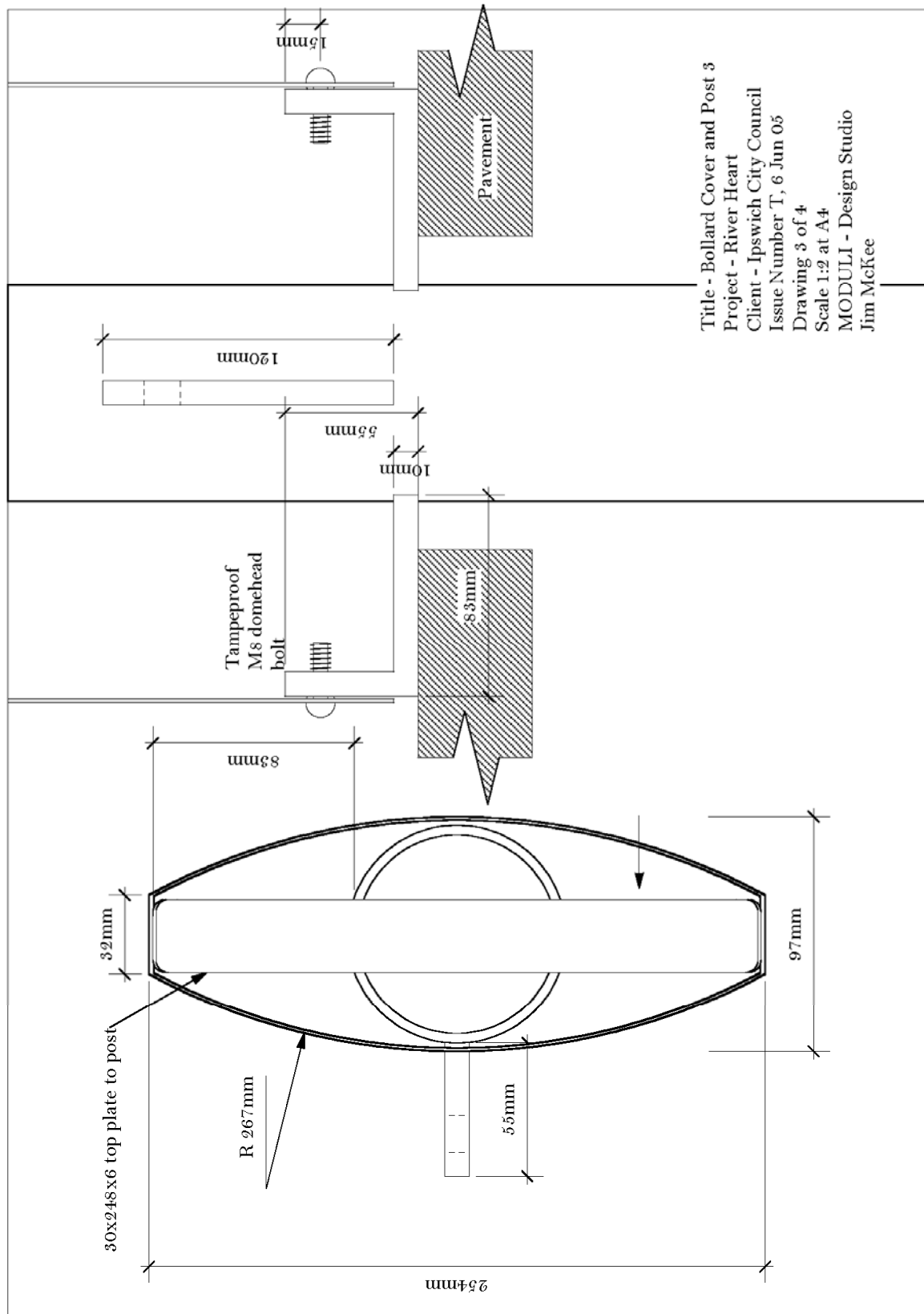
Finishes: Cover – brush finish

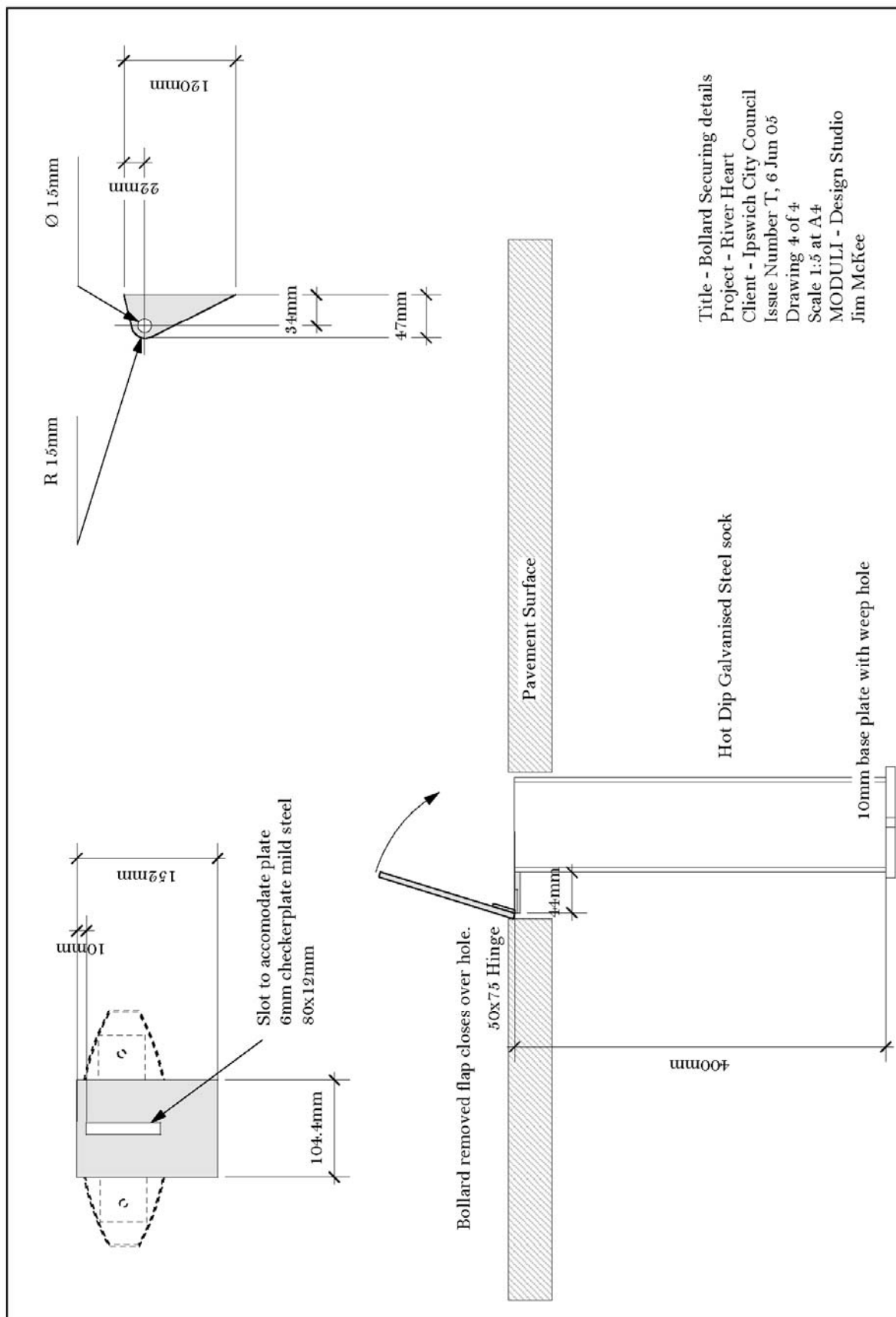
Fixings: refer attached detail.







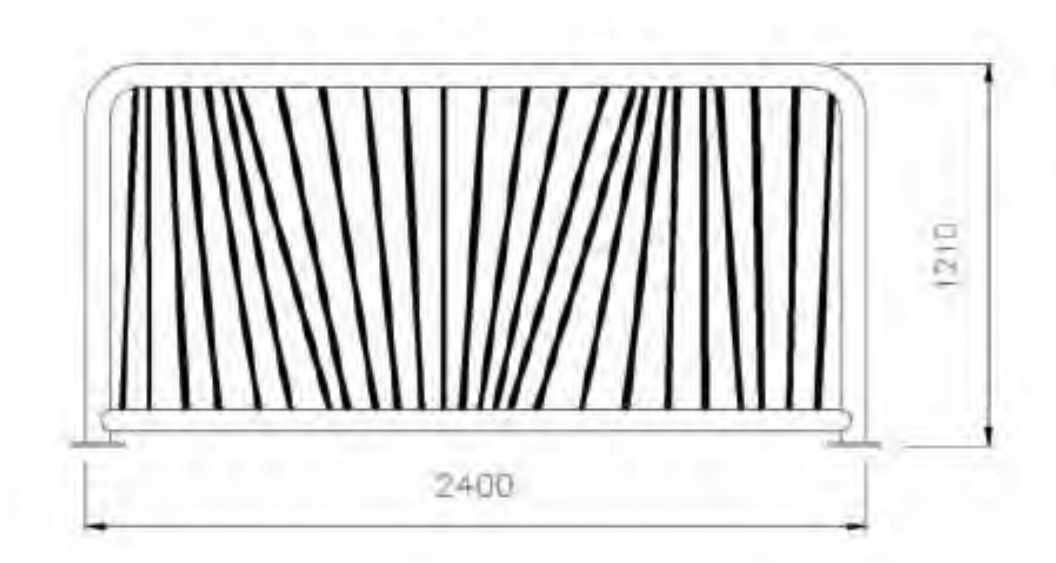




## Appendix J - Balustrade

### Balustrade

Product:	SS24 Balustrading
Supplier:	Urban Fountains and Furniture Pty Ltd
Materials:	304 Stainless Steel
Finishes:	stain polished stainless steel
Fixings:	surface mount 10 mm Dyna bolts or chemsets





## SS24 Balustrading

The SS24 is a unique set of Stainless Steel Balustrading manufactured for the Brisbane City Council. They can be used in a variety of urban streetscapes that require pedestrian safety, including taxi ranks and suburban centres.

### Dimensions

- Height 1200mm
- Length 2400mm (variable)
- $\frac{3}{4}$ " 304 s/s bars
- 76mm diameter outside frame
- 8mm Base plate

### Materials

- 304 Stainless Steel

### Finishes

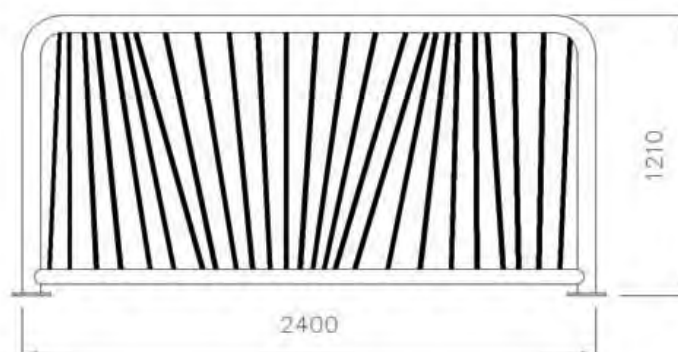
- Satin polished stainless finish

### Fixings

- Surface mounted with Dyna bolts
- Inground with Foundation cage

### Options

- Variable length and heights
- Various designs to your specifications



Urban Fountains and Furniture Pty Ltd

07 3382 7372 << voice info@urbanfountainsfurniture.com.au << email www.urbanfountainsfurniture.com.au << web  
3287 5598 << fax 5 Telford Circuit Yatala Qld 4207 << mail + street 21 086 679 245 << ABN





## Appendix K - Tree Planting

### Tree Planting

Intent: Integrate tree grate with pavement surround

The volume of growing medium can be increased below pavement level through the use of suspended slabs over tree trenches.

Continuous tree trenches can also be achieved where feasible to connect a series of street trees.

