



Planning and Development Update

*"Building a balanced and sustainable Ipswich
with a strong economy,
key infrastructure and a community that cares
for each other and the environment"*

Mayors Message

Message from the Chair

Development Activity Report

Strategic Planning Branch
News

Building and Plumbing News

Engineering and Environment
News

Heritage Awards for
Excellence

in this
EDITION

December 2017 | Edition 25

plandev@ipswich.qld.gov.au



Message from the Mayor

I welcome you to the Christmas edition of the Planning and Development Update Newsletter as the City's new Mayor.

I really enjoyed my 17 month stint as the chair of council's Planning, Development and Heritage Committee and the opportunities it gave me to work with some very capable and talented people in the development industry and our highly dedicated and passionate planning and development staff within Council.

I have not lost my interest in planning and development matters and as Mayor I am keen to see the right development occur in the right places while maintaining the proper balance between new development and the protection of our important cultural heritage and environmental assets.

I now "pass the baton on" to Cr David Morrison, as the new chair of the Planning, Development and Heritage Committee. I know that David will do an excellent job in his new role serving the community.

Regards

Mayor Andrew Antonioli
City of Ipswich



Message from the Chair

Hello and seasons greetings to all the readers and subscribers to the Planning and Development Update Newsletter.

For those who don't know me, I hope that the answers I gave to the Questions on Page 3 provide some insight into my background and motivation.

After being a Councillor for 17 years, I am very excited about the opportunities given to me as Chair of the Planning, Development and Heritage Committee.

It is indeed a very important role in Council.

Regards

Cr David Morrison
Chairperson Planning, Development and Heritage



Planning, Development and Heritage Committee

Planning and Development would like to congratulate Cr David Morrison on his new role as our Planning, Development and Heritage Committee Chairman. In order for you to get to know Cr Morrison we have compiled a list of questions which he has kindly answered for us so you can get to know him better.

Q1: Where did you grow up?

First 7 years in Glasgow, Scotland. The remainder in Camira .

Q2: Where have you worked/what jobs have you had?

First job was working at an engineering supply firm called McPhersons in Fortitude Valley. I commenced picking and packing orders and finished giving government quotations. I then studied to become a Health and Physical Education Teacher, my first 5 years I taught in the Wide Bay Region in the State Schools. I then attended Bible College in Adelaide and returned and

taught at Westside Christian College in Goodna between 1990 and 2000 .

Q3: Tell us some things that not many people know about you.

Married to Susan for 34 years, have twin sons, a daughter, a son in law, a daughter in law and 4 grandchildren. Used to have an afro in the 80's ☺

Q4: What are your favourite sports and past times?

Athletics, Touch and as I get older going for hikes. Used to play guitar – not much time these days.

Q5: Who do you admire?

I admire anyone with the attitude and actions that selflessly serve others in need. There are many people I am still finding in our great City of Ipswich who are never mentioned in the newspaper who have for many years given freely of their time and skills to serve others with a selfless attitude. I also admire anyone who can complete a full triathlon.

Q6: What excites you about the role as chairperson for the PDH Committee?

I believe this is one of the most exciting times in the history of Ipswich City to be Chair of PDH. The current growth and predicted growth for Ipswich City is a result of sound planning in the past. I believe most Councils in Australia would value the staff we have in PDH, staff who love Ipswich and what they do. I have no doubt Ipswich's best days are ahead.

Q7: What would you like to achieve during this term of Council?

There is always a list of long and short term projects both City Wide and in Division 1 which I represent I would love to see become a reality. Delivering a responsible budget that gives Council the discipline and resources to deliver projects while being fair on residents.

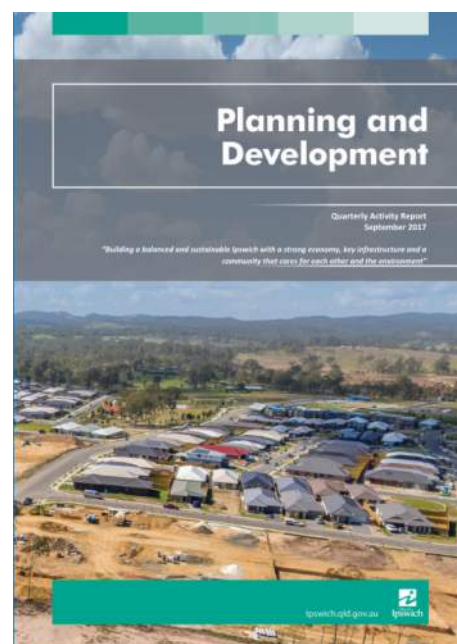
Q8: What frustrates you?

Wastage.

Development Activity Report

The Highlights from the September Quarter Development Activity Report include:

- 2,340 persons population growth, and the Local Government Area population increasing to 206,344 persons;
- an equivalent annual population growth rate of 4.59%;
- Redbank Plains again as the fastest growing suburb;
- Spring Mountain with the highest number of new lots created;
- Collingwood Park with the highest number of new lots approved;
- 21,271m² of new, non-residential building floor space, able to accommodate 393 new jobs;
- 365 development applications lodged;
- 870 plumbing applications lodged;
- 3,384 building and plumbing inspections undertaken;
- 6 major strategic planning projects completed or underway; and
- 186,776 web site visits.



For the full edition of the [September 2017 Quarterly Activity report](#) click on the link.

Strategic Planning Branch News

Planning Scheme and Planning Scheme Policy Major Amendment Package 04/2016

Ipswich City Council has adopted minor amendments to the Ipswich Planning Scheme which came into force on 3 October 2017.

The purpose and general effects of the amendments were to amend the listing details of one (1) Character Place in Goodna and to include eighteen (18) Character Places in Booval, Brassall, Dinmore, East Ipswich, Eastern Heights, Goodna, Ipswich, New Chum, North Ipswich, Raceview, Redbank and Sadliers Crossing in Schedule 2 – of the Ipswich Planning Scheme.



Planning Scheme Major Amendment Package 06/2016

Ipswich City Council has adopted major amendments to the Ipswich Planning Scheme which came into force from 6 November 2017.

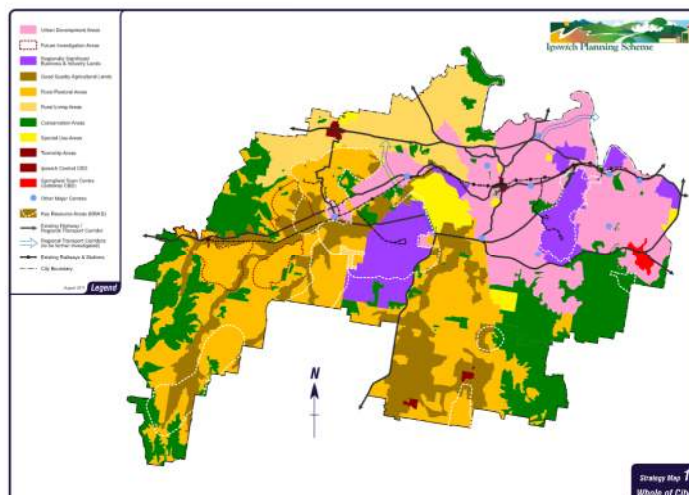
The amendment package included:

- Zoning (Z15, Z23 and Z28) and Strategy Map amendments for:-
 - ◇ 138 Robertson Road, Silkstone to the Special Uses Zone (Sub Area SU1 – School/Educational establishment);
 - ◇ 488 Warwick Road, Yamanto to the Major Centres Zone (Sub Area MC3P – Yamanto Primary Business Area);
 - ◇ 487 Grandchester Mt Mort Road, Grandchester to the Rural E (Special Land Management) Zone;
 - ◇ Consequential amendments to Strategy Map 1 – Whole of City and Strategy Map 2 – Urban Areas to reflect the zone changes above.

- Overlay amendments
 - ◇ Removal of the Kholo Sands Haul Route and associated buffer from Overlay Map OV2 - Key Resource Areas, Buffers & Haul Routes as a consequence of the removal of the haul route and buffer from the State Planning Policy Interactive Mapping.
- Definition amendments
 - ◇ Amendment to Part 14 – Springfield Structure Plan definition of “Local Shops” to

clarify that although primarily intended to consist of a grouping of retail tenancies, the term also includes the use of individual tenancies for commercial premises.

- ◇ Amendment to Schedule 1 – Dictionary definition of “Shopping Centre” to clarify that the use of the premises is to comprise primarily shops.



Strategic Planning Branch News Continued

Planning Scheme Policy Major Amendment Package 02/2017

Ipswich City Council has adopted major planning scheme policy amendments to the Ipswich Planning Scheme which came into force from 6 November 2017.

The amendments related to *Planning Scheme Policy No. 2 – Information Local Government May Request* (PSP2) and *Planning Scheme Policy No. 3 – General Works* (PSP3).

The purpose and general effects of the major amendments to PSP2 were to reflect updated standards and requirements, align provisions with current industry standards, to remove references to outdated standards or requirements and to ensure alignment with the requirements in PSP3 including:

- updated requirements for information the local government may request;

- updated provisions relating to earthworks, structural certification of major structures, electrical and lighting design;
- updated requirements for operational works and engineering plans;
- removal of outdated provisions relating to pit burning of cleared vegetation;
- removal of provisions relating to water and sewerage reticulation;
- inclusion of requirements for street lighting to ensure consistency with PSP3;
- updating and amending *Appendix 1 – Example of Design Certification* and *Appendix 2 – Infrastructure As Constructed Standards*; and
- inclusion of a new *Appendix 3 – Plans and Supporting Information Tables*.

The purpose and general effects of the major amendments to PSP3 were to update requirements including:

- electrical reticulation and street lighting;
- material specifications for line marking;
- use of technical guidance associated with standard drawings; and
- amending the public liability insurance (indemnity) amount for the construction of public (municipal) works.

The amendment package also included administrative amendments to correct explanatory matters, redundant or outdated terms or standards, inconsistent numbering of provisions and text anomalies.

Local Government Infrastructure Plan 01/2017

The Local Government Infrastructure Plan (LGIP) has been sent to the State Government for final consideration following public consultation between 19 June 2017 and 31 July 2017. Following assessment of submissions received Council determined that no changes to the LGIP were required. The State Government issued correspondence on 2 November 2017 to 'stop the clock' on the key performance indicator timeframes in the *Statutory Guideline 01/2016: Making and amending local planning instruments* until 15 December 2017. The State government will 're-start the clock' on 18 December 2017. This is owing to a General Election of the Legislative Assembly of Queensland being called for 25 November 2017. By convention, during the election period, the State government assumes a caretaker role.

The purpose and general effects of the proposed amendments are to:

- Integrate infrastructure planning with land use planning under the Ipswich Planning Scheme 2006.
- Provide transparency regarding Council's intentions for the provision of trunk infrastructure.
- Enable Council to estimate the cost of infrastructure provision to assist its long term financial planning.
- Ensure trunk infrastructure is planned and provided in an efficient and orderly manner.
- Provide a basis for the imposition of conditions about infrastructure on development approvals.



Strategic Planning Branch News Continued

Five things you probably didn't know were protected under the Ipswich Heritage Program

The award-winning Ipswich Heritage Program includes more than 7400 places and items of interest. Today we take a look at five of the more unusual listings.



Hitching Rail (Elizabeth Street, Ipswich)

Located opposite St Mary's Church in Elizabeth Street, This horse hitching rail was handmade by blacksmith Robert Campbell. It was used by members of the congregation who arrived on horseback and is the only surviving hitching rail fence in Ipswich. Council researchers are trying to work out when the rail was built. If you can help solve this horse head scratcher email: ipswichfirst@ipswich.qld.gov.au



WWII Shelter (The Terrace, North Ipswich)

The air raid shelter from WWII was built using two layers of bricks with reinforced concrete infill. Four shelters dotted Limestone Street in January 1942 and there were plans to build another 10 at key locations across the CBD.

Strategic Planning Branch News Continued

Five things you probably didn't know were protected under the Ipswich Heritage Program continued



Sandstone Kerb and Channel (Brisbane Road, Redbank)

Local governments played an important role in unemployment relief during the Great Depression of the 1930's. In 1935 Moreton Shire Council announced a £10,000 plan to construct footpaths along the main road between Bundamba and Redbank. This sandstone and limestone section remains intact opposite Tile Street.



Winding Engine (Ella Street, Blackstone)

The engine nicknamed Jessie Brown was built at the Victoria Foundry in Sandhurst, Bendigo in 1887. It was installed at West Moreton colliery in Ipswich later that year, where it was used to control a mining cable, and was said to be "the most powerful piece of mechanism in South Queensland."

It is named after the eldest daughter of Peter Brown, chairman of West Moreton Coal and Coke Company Limited and a former Mayor of Ipswich.

Strategic Planning Branch News Continued

Five things you probably didn't know were protected under the Ipswich Heritage Program continued



Water Trough (Corner of Tantivy and Moores Pocket Roads, Tivoli)

Water troughs were installed throughout Ipswich in the early 1900s.

This concrete trough on Tivoli Hill was built in 1921 and was used by mill carters who worked at the dairy in Moores Pocket. Records show carters took their horses to the trough for a rest and refresh that was likened to “a petrol kerb pump for motor traffic”.

Ipswich Heritage Program or Queensland Heritage Register? It's all about significance.

Local and state heritage listings reflect different levels of significance and are regulated by the respective levels of government.

Local governments like Ipswich City Council protect places that have importance or significance at a local level. The Ipswich Planning Scheme includes provisions to identify and protect places of cultural heritage significance as part of the Ipswich Heritage Program.

The Queensland Government protects places that have importance or significance at a state level.

These form part of the Queensland Heritage Register, which is administered by the Department of Environment and Heritage Protection and the Queensland Heritage Council.

If you would like to Celebrate Ipswich's Heritage, History and its Heroes subscribe to [Ipswich First](#).

Plumbing News

The Queensland State Government has introduced the Plumbing and Drainage Bill 2017 into Parliament. The Bill is designed to enhance community safety and save time and money on new building approvals as part of the Queensland Building Plan. The new laws have been written to update the current Plumbing and Drainage Act 2002. The Bill aims to streamline current plumbing and drainage laws to reduce the regulatory burden on industry, without compromising public health and safety.

The Minister for Housing and Public Works Mick de Brenni said 'Queensland's world class plumbing industry keeps Queenslanders safe every day' and that the new Bill would help ensure Queensland maintains the highest plumbing and gasfitting standards.

The Bill was referred to the Public Works and Utilities Committee to be reviewed and reported back to Parliament by 23 November 2017. Since the introduction of the Bill a general election has been called which will put the progress of this Bill on hold pending the election outcome and the requirements of the incoming Parliament.



Building News

Summer is nearly upon us and it is recommended to take the time to check your swimming pool and fence to ensure that it complies with the pool safety standard. All gates must self-close and self-latch with all likely toeholds and overgrown vegetation to the fence removed and a legible CPR sign installed. Further information and self-assessment checklists on the technical specifications can be located on the Queensland Building and Construction Commission (QBCC) website www.qbcc.qld.gov.au.

The Queensland Building and Construction Commission (QBCC) released a technical bulletin on 24 October 2017 advising all property owners and the industry that the replacement of more than 20 percent of an existing roof in Queensland will require a building permit from a Building Certifier. A building permit must be obtained prior to commencing building works and must include a copy of the contractor's home warranty insurance notice of cover from the QBCC for building works exceeding \$3,300.00. Further information on this matter can be obtained from the Queensland Building and Construction Commission (QBCC) website www.qbcc.qld.gov.au.

In the spirit of Local Government co-operation, Ipswich City Council's building team opened their doors to Murweh Shire Council's Building Cadet Andrew Short. Murweh, is a remote Council with a population of less than 5,000 and an area encompassing 40,742km², as opposed to Ipswich's population of 208,000 and an area of 1,095km². It was great to offer the opportunity and an insight into Ipswich City Council's building process and outcomes as well as the supporting systems and technology. Ipswich building staff will continue to provide ongoing mentoring and support to Andrew during his studies to become a building certifier.



Developing Engineers to Development Engineers – 10 Years of Cadets

November has marked a special milestone for a number of engineers within the Planning and Development family. Current P&D members, Matt Lennon, James Hickey, Mitchell Weatherhead and former P&D member Josh Ellis (now with ICC's Infrastructure Services department) are four of the six original participants in Council's Cadetship Program launched in November 2007.

One of the visionaries and key drivers of the program was current Engineering and Environment Manager, Gary Ellis. His vision was to provide an opportunity for local undergraduate engineers to gain practical work experience, part-time employment and study assistance whilst allowing Council to grow and develop their own engineers. At the time, Council was finding it difficult to recruit engineering staff owing to the mining and resource boom, however the Class of '07 was the first and only intake. Maybe this was a reflection of the high calibre of the cadets or the downturn in the engineering market...I'll let you decide!

Though some of the four may have been 'prodigal sons', they have managed to find a home as a Development Engineer. It is hoped that they will stay around and remain an integral part of the ICC Engineering community and grow grey hairs rather than give them!! Congratulations guys!



Engineering and Environment News Continued

Gone Fishin'!

Do you ever wish that you could leave a sign on your office chair or door with the words - “Gone Fishin’”? Well, three members of the Engineering and Environment Team got to live out that dream when attending the SEQ Fish Passage Field Trip - hosted by Catchment Solutions. The field trip incorporated site visits of Berry’s Weir Rock Ramp Fishway (Bremer River, Ipswich), Paradise Road Rock Ramp and Horizontal Culvert Baffle Fishway (Slacks Creek, Logan), Hillards Creek Rock Ramp Fishway (Redlands) and South Pine River nature-like Rock Ramp Fishway (Brendale). As a quick background, fishways are structures placed on or around constructed barriers to give fish the opportunity to migrate. Improving aquatic connectivity is increasingly being recognised as a crucial component in waterway restoration.

The tour showcased the significant investment in SEQ over recent years to restore connectivity through the installation of fishways on barriers within the region. The field trip gave an opportunity for our engineering and environmental staff to inspect and discuss these sites. From the staff who attended, the key learning topics were Fish Migration in SEQ, fish barrier prioritisation – which ones to remediate, fishway design options (pools, flow slots, riffles) and can connectivity help fight the scour of pest fish such as tilapia and carp.

So are fishways effective in fish mitigation? Well, the pre-fishway and post-fishway monitoring data on the remediated Slacks Creek passage recorded an increase of 1,368 fish/day. This equates to a staggering 36,981% increase – now that’s a good return on investment in anyone’s books!!

The field trip was also a timely reminder from a development perspective that if you are working in and around creeks and waterways you must consider the Waterway Barrier Works Codes by Fisheries Queensland.

Fun Fact: Ipswich’s Berrys Weir Rock Ramp Fishway on the Bremer River (shown below) is the longest in Australia - over 90m long...and it only took three weeks to construct!



Heritage Awards for Excellence

The awards for Excellence in Design and Heritage was adopted in 1992 to publicly recognise, promote and reward excellence in the design and construction of new developments and the conservation of heritage places throughout the City of Ipswich.

2017 has seen some exceptional entrants and has given students from all levels of education the opportunity examine the culture, environment and heritage of the Ipswich region.

For the full list of all Heritage Award entrants please use the following link: <http://www.ipswichplanning.com.au/heritage>

Overall Heritage Award for Excellence—Queensland Pioneer Dinner Train



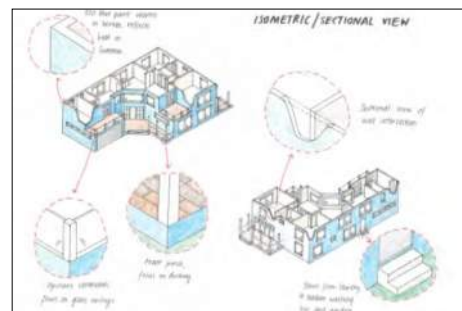
- ◆ Queensland Pioneer Steam Railway Co– Op Ltd
- ◆ David Fennell
- ◆ Neil McFadzen
- ◆ Peter Kenzler



Overall Design Award for Excellence—Year 12 Modern home Design Project



- ◆ Ipswich Girls Grammar School
- ◆ Louise Porter
- ◆ Madeleine Arnold
- ◆ Tilly McEwan-Watson



Overall Environment and Student Award for Excellence—Growing Gardeners



- ◆ Ipswich West State School



Heritage Awards for Excellence Continued

Hall of Fame—Whitehead Studios

The studio was first established on the 10th March 1883 by Mr Francis Arnold Whitehead. Francis was born in Ipswich in 1863, he was the son of Reverend Samuel Francis Whitehead and Caroline Whitehead.

The Whitehead family lived in Brisbane Street and as a young boy Francis attended Pine Mountain School, the Little Ipswich School and he went to the Ipswich Grammar School for 2 years.

From a very young age he showed a keen interest in photography, which was fanned by his neighbor, Biggingee Sorabjee Poochee who operated his photography studio next door to the Whitehead's Brisbane Street residence. He is said to have taught Mr. Whitehead his photography skills.

In 1880, Francis gained employment with the local photography company Frisco's in Ellenborough Street. By 1883, Francis had produced a large majority of small postcard sized portraits known as carte de visites for the Frisco Photo Company. It was at this point that the company was put up for sale and promptly purchased by Mr. Whitehead, where he opened his own portrait and landscape photography business, "F. A. Whitehead".

In 1888, after five years of operating out of his Ellenborough Street studio, F. A. Whitehead moved to a new premises on Brisbane Street, a studio that was previously operated by Biggingee Sorabjee Poochee from 1864-1873 and later taken over by Mr. W. Deazley. The site contained a small wooden building and was located between a Draper/Clothier and F. J. Stephens shoeing forge. During his time operating from his Brisbane Street premises, Whitehead often travelled around with his portable horse drawn darkroom to many regional areas in and around Ipswich to visit residents that could not make their way to his studio, which was a contributing factor to his excellent reputation throughout Queensland.

By 1901, Mr. Whitehead's reputation had grown and soon the establishment on Brisbane Street became too small to undertake his extra business. A new two storey building designed by George Brockwell Gill was built by Worley and Whitehead. It opened for business in December of 1901.

In 1906, Francis' son Arthur joined the business and later in 1922 his youngest son Wilson followed. Arthur and Wilson's sons, Ken and John also followed in their father's and grandfather's footsteps having joined the organisation in the late 1940s and early 1950s.

During its many years of operation, Whitehead Studios became a pioneering photographic company in Ipswich. They introduced several new methods of photography and became one of the first studios in Queensland to use direct colour in photographs in 1958.

Without the excellent workmanship of Francis Arnold Whitehead and his sons and grandsons, Ipswich would have little reminder of its past and the many milestones reached by the city since its settlement in 1839. We have Whitehead Studios to thank for our wonderful pioneering history they tamed through the photographs they took of our changing city and the families who lived and currently live in the town of Ipswich. Source: QT and The Whitehead Legacy.

Gordon Reeves had the privilege of continuing the Whitehead family business from 2004 until 2017.



While Gordon was operating the business, the Whitehead Historic Collection of plate glass negatives was donated to the Ipswich Library. This valuable collection of Ipswich and its people has been included on the Picture Ipswich website.



Formal wedding portrait of unidentified couple, Ipswich, ca. 1920
Source: Picture Ipswich



Brisbane Street looking west from corner Ellenborough and Brisbane Streets, Ipswich, ca. 1898
Source: Picture Ipswich

Staff Profile

Anthony Scholes



Anthony began his town planning degree in 2014. During this time he undertook work experience and placement at Ipswich City Council with a passion to improve the city in which he lives. Following his graduation in late 2017, Anthony began full-time work at council to build on his learnings and expand his professional experience within a city with a vast array of land-uses.

Anthony is particularly passionate about planning for active transportation modes and future technologies that could be incorporated into modern cities.

During his degree, Anthony took the opportunity to travel to the United Kingdom to further his studies and experience a different culture. This included comparative analysis of the English and Australian planning systems.

During his time away from the office, Anthony enjoys playing football (soccer) and, cooking and baking delicious treats.

Murray Ross



Murray Ross started with Ipswich City Council in November 2017 as Senior Planner, West Team.

Murray joined the team from Moreton Bay Regional Council, where he worked as Senior and Principal Planner with the North Lakes team for 17 years. Murray has been a specialist on the North Lakes development and responsible for all matters North Lakes for all but the first 2 years when the development started in 1998. Murray piloted innovation in housing products including small lots, streetscape,

reduced width streets, open space management including lakes and bio-retention, and facilitating economic development of a major regional centre including Westfield, Ikea and Costco. At completion of the North Lakes development Murray was attracted to Ipswich with its proliferation of heritage character and the pace of development at Springfield and Ripley Valley which is very similar to North Lakes in most aspects.

Prior to North Lakes, Murray worked as a planner with Brisbane City Council, so brings a lifetime of planning experience with him to Ipswich. As a fresh graduate, Murray took a 5 year job with a Singapore based oil exploration company working in Indonesia and the jungles of Irian Jaya. Upon return to Brisbane, Murray completed his first house renovation (day job) and his Master's degree in planning (night job), then took a job at Brisbane City Council in the Central City Team, trading the Irian Jayan jungle for the concrete jungle.

Murray list his passions as planning and restoring his Californian Bungalow at Sherwood. In his spare time Murray interests are wide ranging and include farming, camp drafting, Brahman genetics, sailboarding, offshore power boat racing, sports cars, dirt bikes, Straddie and fine dining. Murray points out that these are largely past interests and lists his current activities as kid's taxi, junior sports spectator and domestic diva looking after his kids James and Audrey, 9 and 10.

Bub Update



The Planning and Development Department continues to add to the population of Ipswich.

However we have no anticipated bubs for the end of 2017.

The Planning and Development babies total since June 2011 is currently still sitting pretty at 54—adding to Ipswich's milestone of 208,000 residents.

Merry Christmas from the Planning and Development Department

The Planning and Development Department wish you a Merry Christmas and prosperous new year.

We look forward to working with you again next year.

John Adams (City Planner), Branch Managers and their Teams





Development Enquiries

07 3810 6888

Building Enquiries

07 3810 6130

Strategic Planning Enquiries

07 3810 6888

Cultural Heritage Enquiries

07 3810 6666

Visit PD Online on Councils
website:

ipswichplanning.com.au

main
CONTACTS