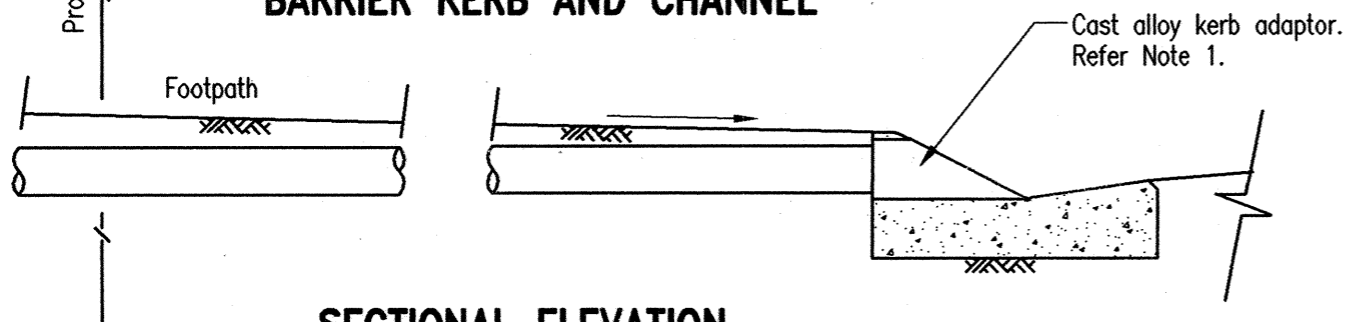
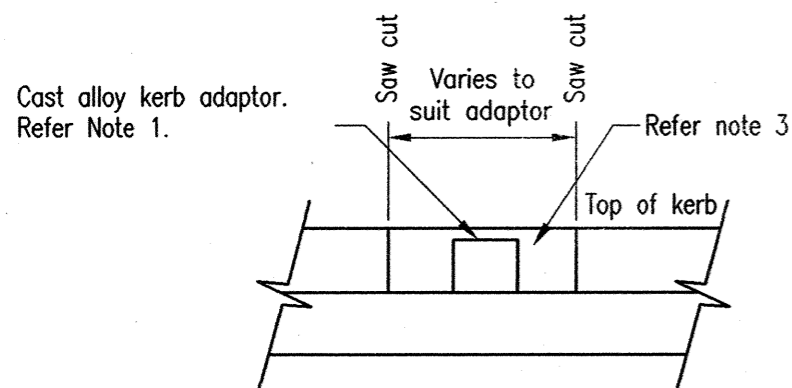


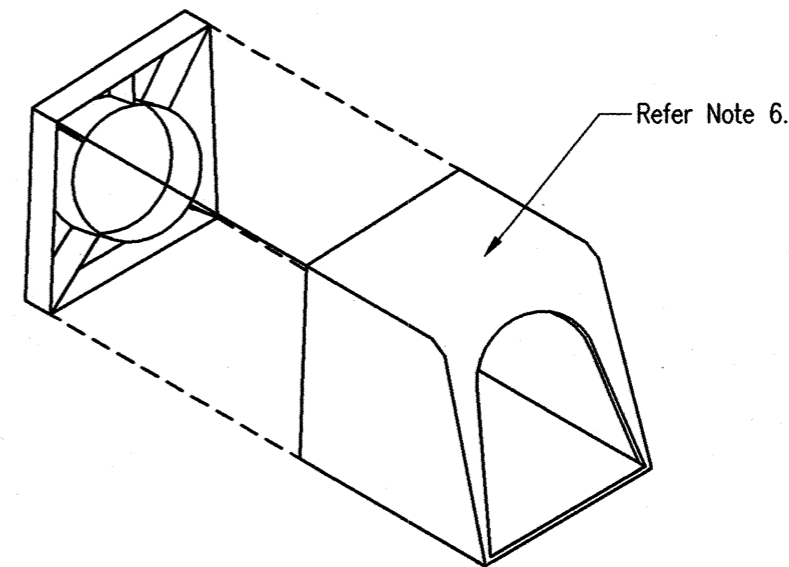
**SECTIONAL ELEVATION
BARRIER KERB AND CHANNEL**



**SECTIONAL ELEVATION
MOUNTABLE KERB AND CHANNEL**

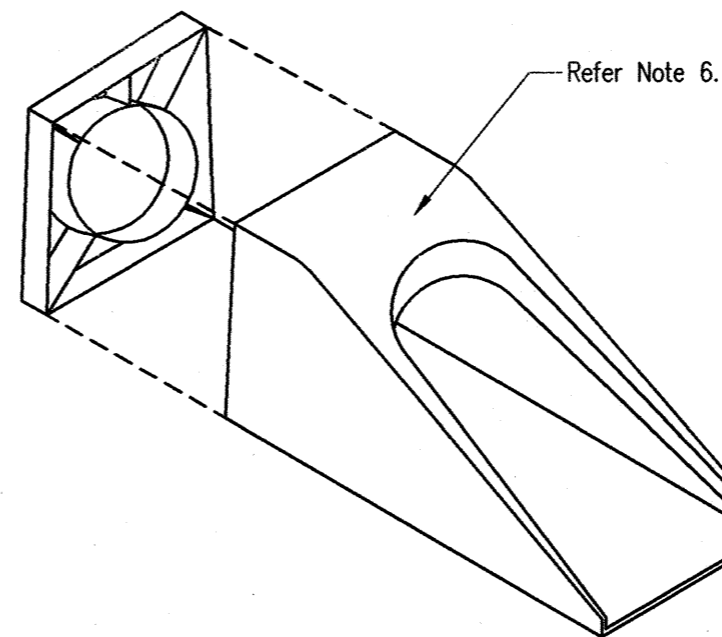


**ELEVATION
EXISTING KERB AND CHANNEL**



BARRIER KERB ADAPTOR

Typical only 90 ϕ and 100 ϕ cast alloy.



MOUNTABLE KERB ADAPTOR

Typical only 90 ϕ and 100 ϕ cast alloy.

NOTES

1. Standard 90 ϕ or 100 ϕ cast alloy adaptor to suit barrier or mountable type kerb and channel.
2. Pipe across footpath to be laid with the maximum available cover, and with a minimum grade of 1 in 80.
3. At existing kerb and channel saw cut kerb as necessary. Reinstate with N20/10 concrete in accordance with AS 1379 and AS3600 to clean concrete faces.
4. Use kerb adaptors that match kerb profile.
5. All adaptors are to be installed according to manufacturer's specifications with invert nominally above kerb invert.
6. Refer project drawings/specifications for option to be adopted.
7. At new developments seal inlet to adaptor.
8. All dimensions in millimetres.

REVISIONS					
AMENDMENT	INITIALS	DATE	AMENDMENT	INITIALS	DATE
F				L	
E				K	
D				J	
C				I	
B	Revised to cast alloy			H	
A	ORIGINAL ISSUE			G	

IPSWICH CITY COUNCIL

50 SOUTH STREET
IPSWICH 4305
P.O. BOX 191



Phone (07) 3810 7894
(07) 3810 7927
Fax (07) 3810 7950

APPROVED

R.D.
WORKS MANAGER
DATE 19.3.07

STANDARD DRAWING

**STANDARD KERB AND CHANNEL
ROOFWATER DRAINAGE CONNECTIONS**

ROADWORKS

SR.17

REV: B DRAWER: 100