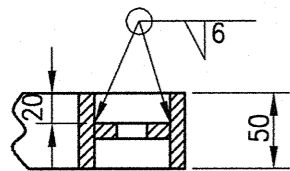
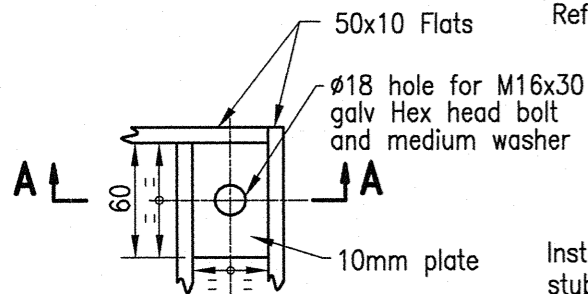


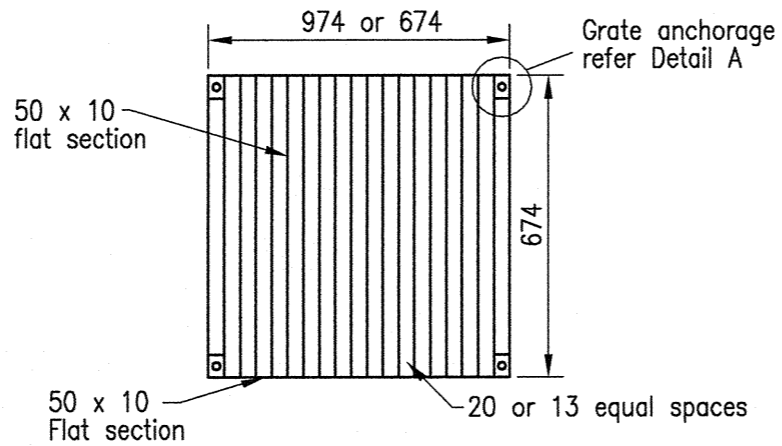
**ANCHOR DETAIL**



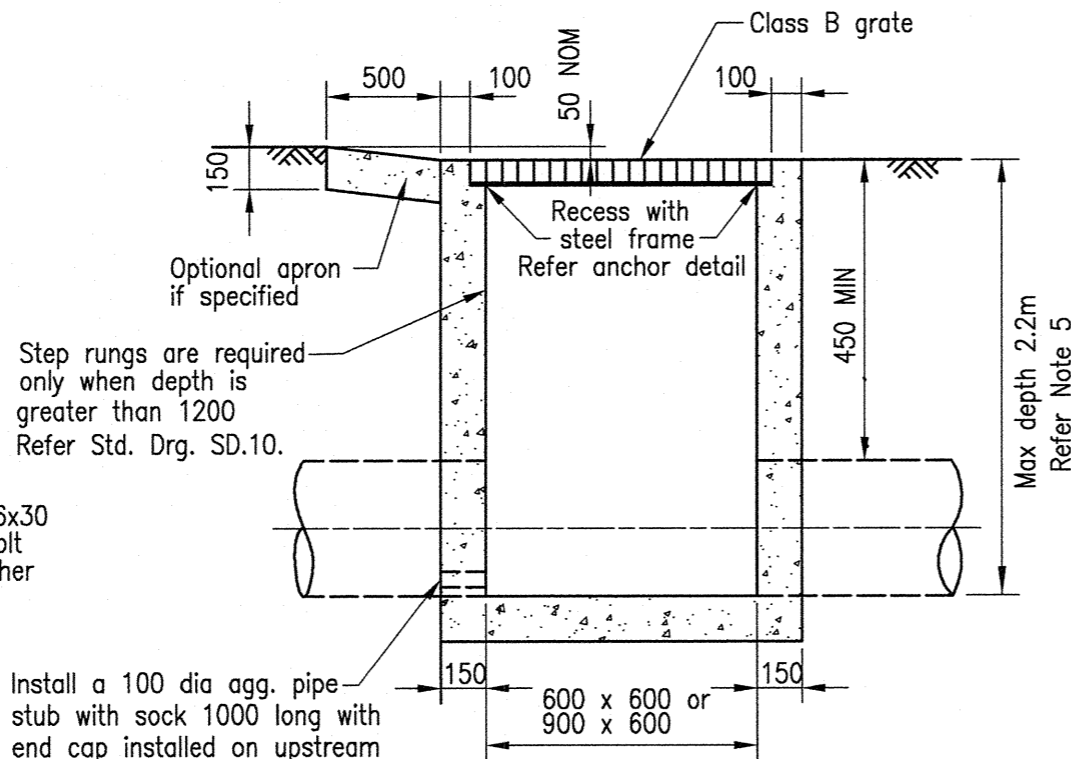
**SECTION A-A**



**PLAN  
DETAIL A**



**GRATE DETAIL**



**SECTION OF FIELD INLET  
TYPE 2**

**NOTES**

1. Concrete Class N32/20.
2. Structural Concrete to AS 1379 and AS 3600.
3. Live Load Surcharge, earth and ultimate load factors are in accordance with Australian Bridge Design Code.
4. Reinforcement in pits : Cover to reinforcing steel to be 40mm unless shown otherwise. Exposure classification B1.  
Steel reinforcement to be read in conjunction with Drg No.'s 1043 and 1044. Reinforcing steel to be Grade 400Y to AS 4671. Reinforcing mesh to AS 4671.
5. Pits up to a depth of 2.2 metres do not require steel reinforcement. One layer of SL81 mesh is to be placed centrally in the walls for pit depths 2.2 to 3.0 metres.
6. Grates and Frames shall comply with the requirements of AS 3996 Class C design. Grates detailed are to be used where cyclists are excluded. Where bicycle safe grates are required, only approved grates and frames are to be used. Bicycle safety testing of grates shall be in accordance with AS 3996.
7. Face of Frames on which grates sit shall be true.
8. Steel to be Grade 250 to AS/NZS 3678 and AS/NZS 3679.1.
9. All Steelwork to have weld splatter and welding slag removed prior to hot dip galvanising to AS/NZS 4680.
10. Welding symbols are to be AS 1101.3.  
Welding to be to AS/NZS 1554.1  
Welding consumables to be E48XX or W50X.
11. Hexagonal head bolts to AS 1111.  
Nuts to AS 1112  
Washers to AS 1237  
Galvanised to AS 1214 and AS 4680
12. Dimensions are in millimetres unless shown otherwise.

REVISIONS					
AMENDMENT	INITIALS	DATE	AMENDMENT	INITIALS	DATE
F				L	
E				K	
D				J	
C				I	
B				H	
A				G	

Reo. Label Amended. Notes 1 & 4 Amended. Notes 4 & 11 Aust. Stds. Updated. *[Signature]*

ORIGINAL ISSUE

**IPSWICH CITY COUNCIL**  
 45 Roderick St  
 P.O. Box 191  
 Ipswich QLD 4305  
 Australia

Tel (07) 3810 7894  
 Tel (07) 3810 7927  
 Fax (07) 3810 7950

APPROVED  
*[Signature]*  
 CHIEF OPERATING OFFICER (ES)  
 DATE *14.9.10*

**STANDARD DRAWING**

**STANDARD FIELD INLET AND OVERFLOW PIT  
TYPE 2**

**DRAINAGE**

**SD.09**

REV: B DRAWER: 100