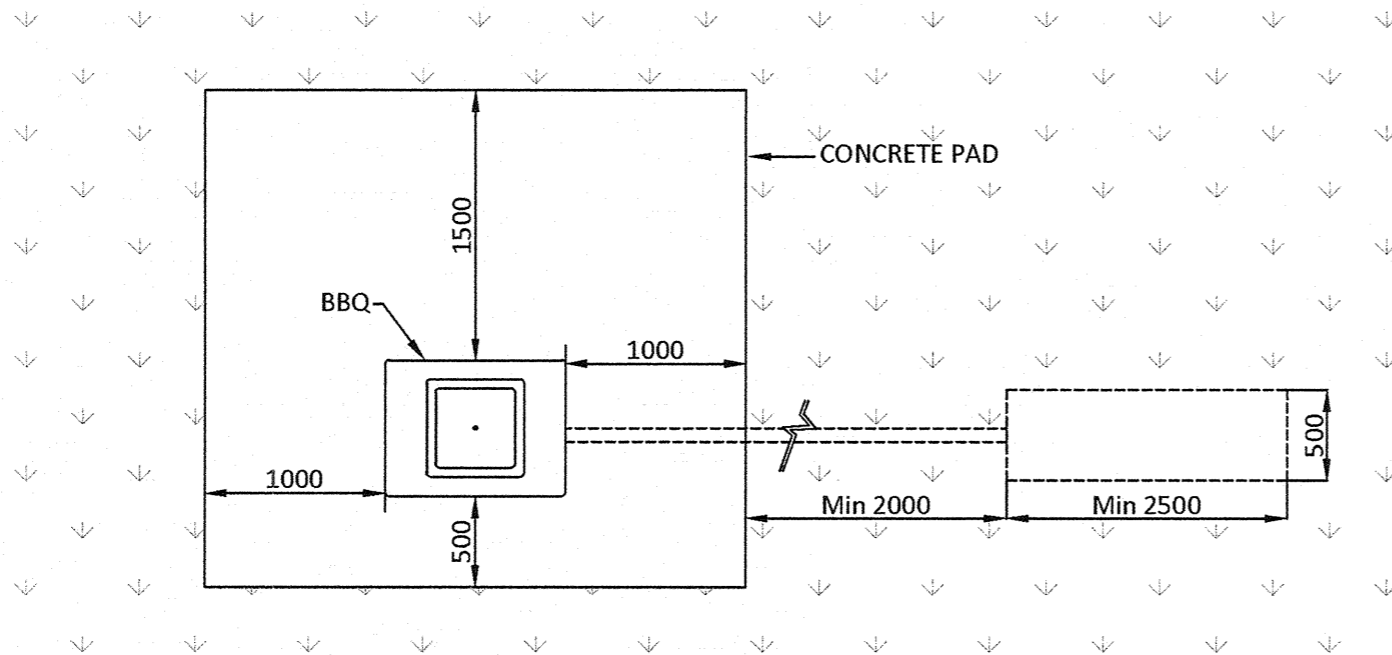


PLAN: UNCOVERED BBQ AND SOAKAGE PIT
SCALE: 1:20



PLAN: UNCOVERED BBQ AND SOAKAGE PIT
SCALE: 1:40

NOTES:

1. The location of all BBQ's is to be approved by ICC. BBQ to be installed in district and citywide parks only.
2. BBQ to be Christie BBQ or equivalent approved by ICC.
3. BBQ'S to be positioned within in picnic nodes.
4. Concrete to be minimum grade N25 broom finished 125mm thickness reinforced with SL72 mesh with min. top and bottom cover of 50mm.
5. There is to be no pooling of water on concrete pad. Fall to be 1% min. - 2.5% max. Water to drain away from BBQ.
6. Slab size shown is minimum requirement size. May vary at nodal points or where extra circulation space is required. Slab size to increase to areas where more than one BBQ is required.
7. Concrete slab to finish level with adjacent surfaces.
8. Soakage pit only required on BBQ open to the elements.
9. Baffled fat collection tray/grease trap to be installed on all BBQ'S open to the elements.
10. BBQ to be installed to Manufacturer's specifications.
11. All electrical work to be undertaken by a qualified electrician.
12. BBQ electrical supply to be metered.

REVISIONS					
AMENDMENT	INITIALS	DATE	AMENDMENT	INITIALS	DATE
F				L	
E				K	
D				J	
C				I	
B	Notes Altered			H	
A	ORIGINAL ISSUE			G	

IPSWICH CITY COUNCIL
 45 Roderick St
 P.O. Box 191
 Ipswich QLD 4305
 Australia

Tel (07) 3810 7894
 Tel (07) 3810 7927
 Fax (07) 3810 7950

APPROVED

 CHIEF OPERATING OFFICER (WPR)
 DATE 29-7-13

STANDARD DRAWING

FURNITURE - STAND ALONE BBQ

PARKS

SP.61

REV: B DRAWER: 100