

SCHEDULE 7—KEY REFERENCE MAPS

(1) This schedule contains the following Key Reference Maps—

- (a) Map 1 – Principal Conservation Areas and Integrated Open Space Network;
- (b) Map 2 – Housing Opportunities and Urban Growth Corridors;
- (c) Map 3 – Commercial and Community Centres and Business and Industry Lands;

- (d) Map 4a – Transport Network;
- (e) Map 4b – Transport Network;
- (e) Map 5 – Rural Areas – Agricultural Land Classes;
- (f) Map 6 – Designated Watercourses.



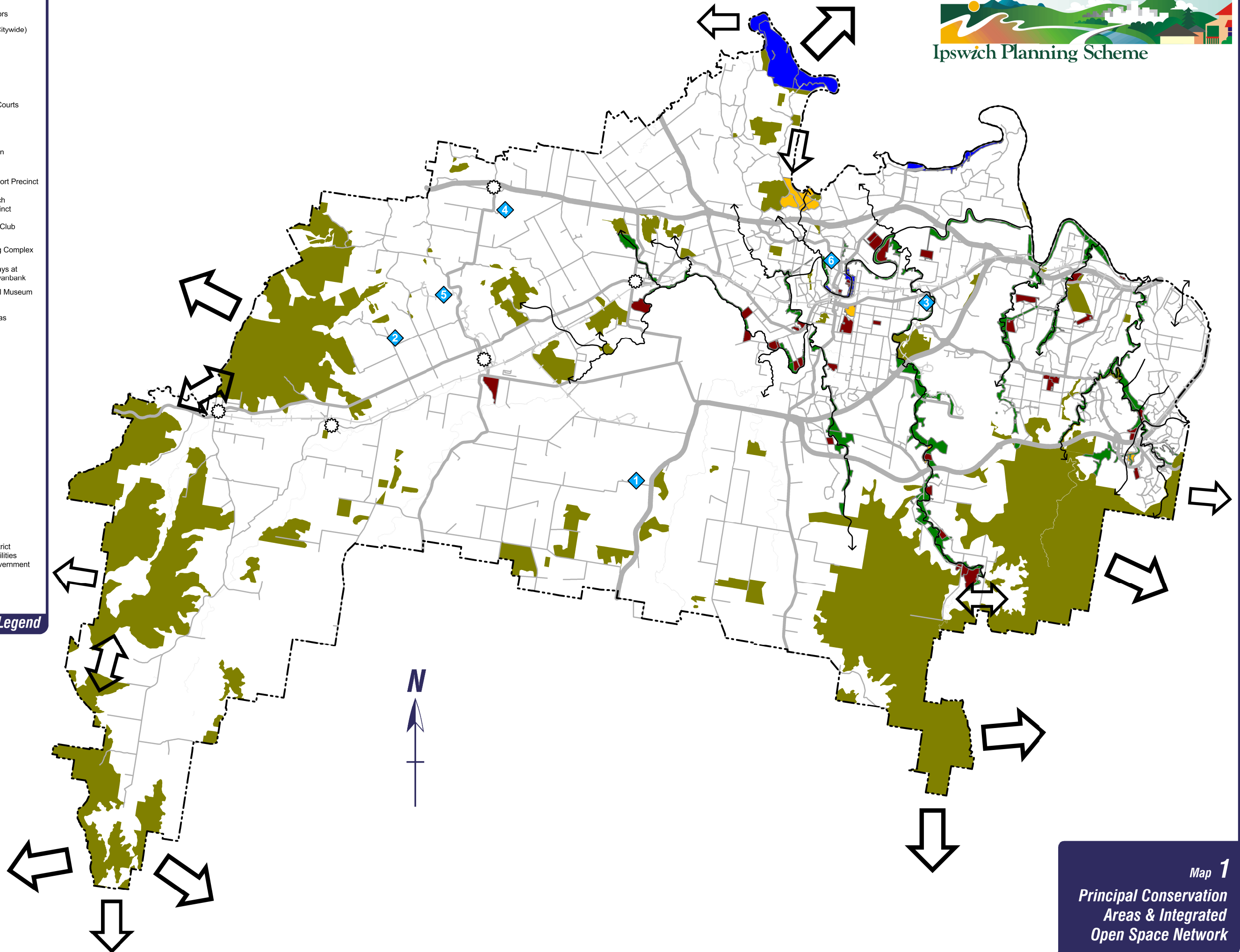
- Linear Open Space Corridors
- Existing / Planned Major (Citywide) Recreational Facilities
- Recreation Parks
- Waterside Parks
- Sportsgrounds & Courts
- Linear Parks

- ◆ Other Significant Recreation Opportunities
- 1 Ipswich Motorsport Precinct
- 2 Proposed Ipswich Equestrian Precinct
- 3 Bundamba Turf Club
- 4 Marburg Trotting Complex
- 5 Historical Railways at Rosewood & Swanbank
- 6 'Workshops' Rail Museum at North Ipswich

- Principal Conservation Areas
- Principal Conservation Area Linkages
- Highway
- Other Major Roads
- Roads
- Railway
- Rivers
- Township
- City Boundary

Note: Full details of Citywide, District and Local Recreational Facilities are located in the Local Government Infrastructure Plan (refer to Part 13 of the Ipswich Planning Scheme).

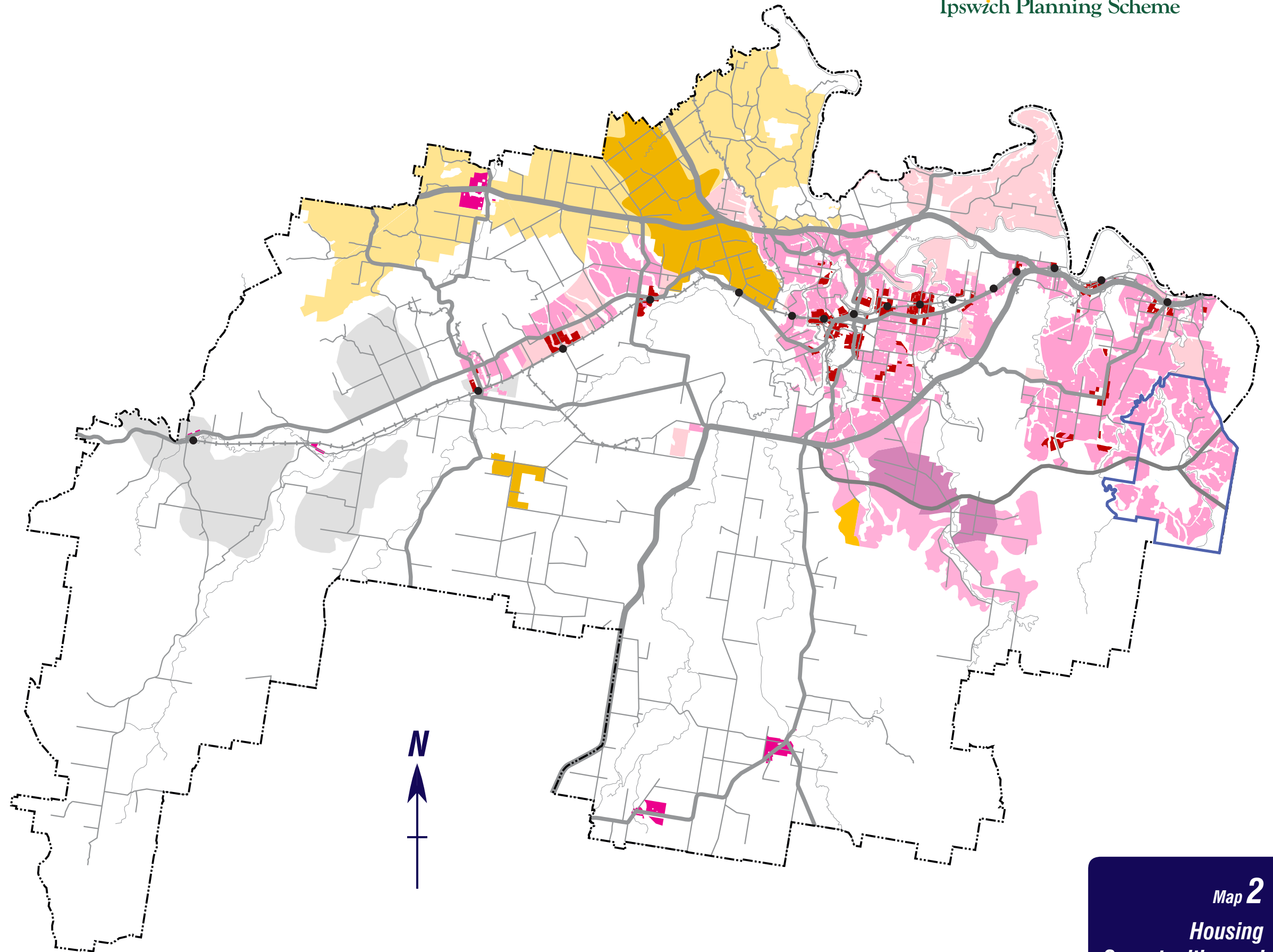
April 2018 **Legend**



- Large Lot Residential
- Low Density Residential
- Medium/High Density Residential
- Mixed Use Medium / High Density Residential
- Townships
- Future Investigation Areas
- Rural Living
- Rural Living - with Major Constraints
- Railway Stations
- Ongoing master planning at Springfield will further identify the medium/high density housing opportunities within the community residential and town centre designations.
- Highway
- Other Major Roads
- Roads
- Railway
- Rivers
- City Boundary

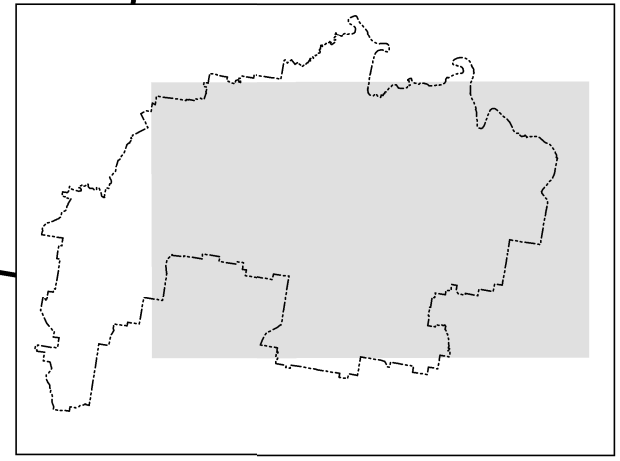
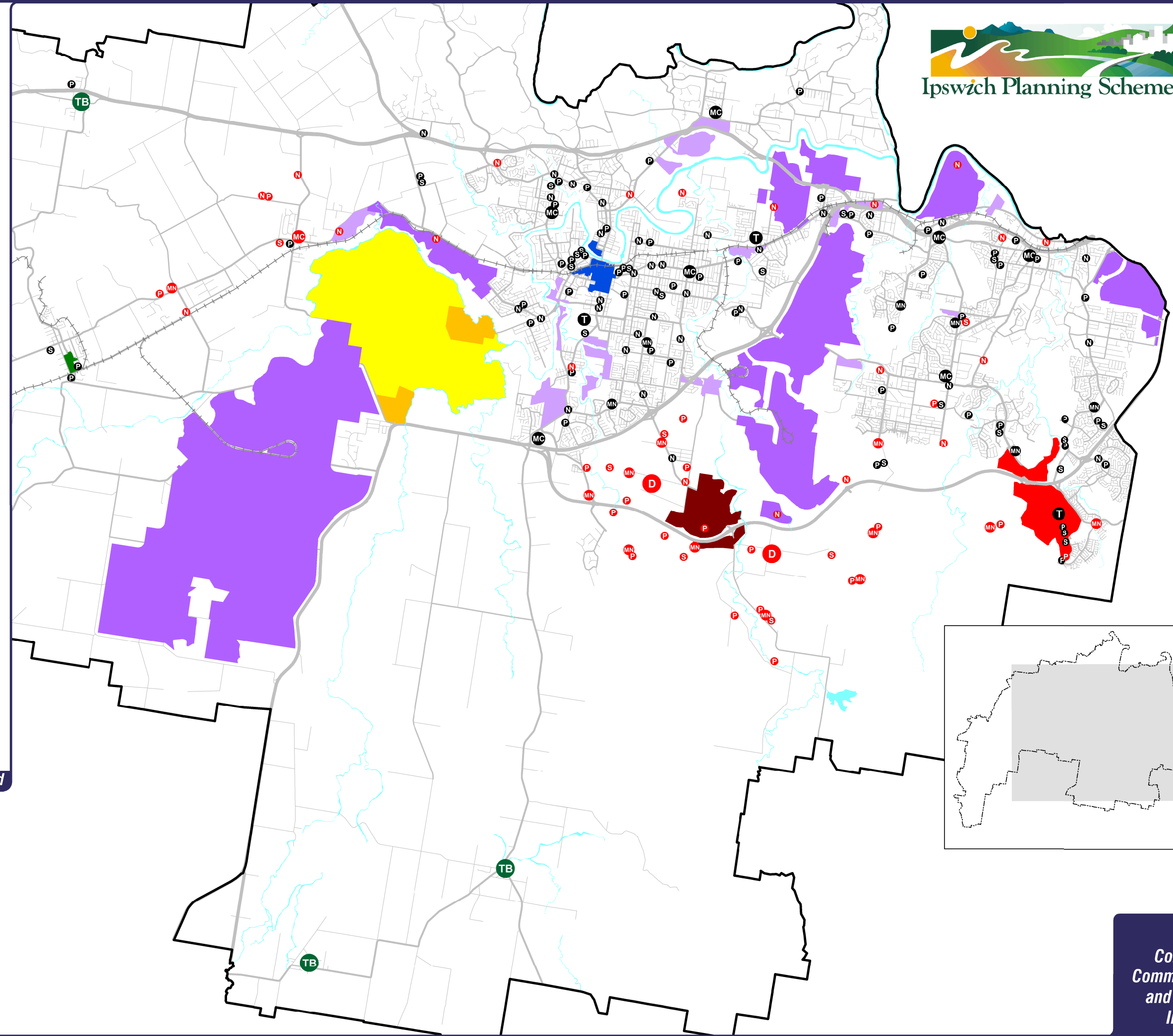
August 2016

Legend



















- Ipswich Central CBD - SEQ Key Centre
- Amberley Air Base
- Potential Aviation & Aerospace Business Precincts
- Regionally Significant Business Enterprise & Industry Areas
- Local Business & Industry Areas
- Springfield Town Centre - Gateway CBD
- Ripley Urban Core
- Rosewood Town Centre
- TB Township Business Areas
- D District Centres - Proposed
- MC Major Suburban Centres - Existing
- MC Major Suburban Centres - Proposed
- MN Major Neighbourhood Centres - Existing
- MN Major Neighbourhood Centres - Proposed
- N Local Neighbourhood Centres - Existing
- N Local Neighbourhood Centres - Proposed
- Educational Facilities**
- T Tertiary - Existing
- T Tertiary - Proposed
- S Secondary - Existing
- S Secondary - Proposed
- P Primary - Existing
- P Primary - Proposed
- Highways
- Main Road
- Road
- Street
- Railway
- Rivers
- City Boundary

December 2012 **Legend**

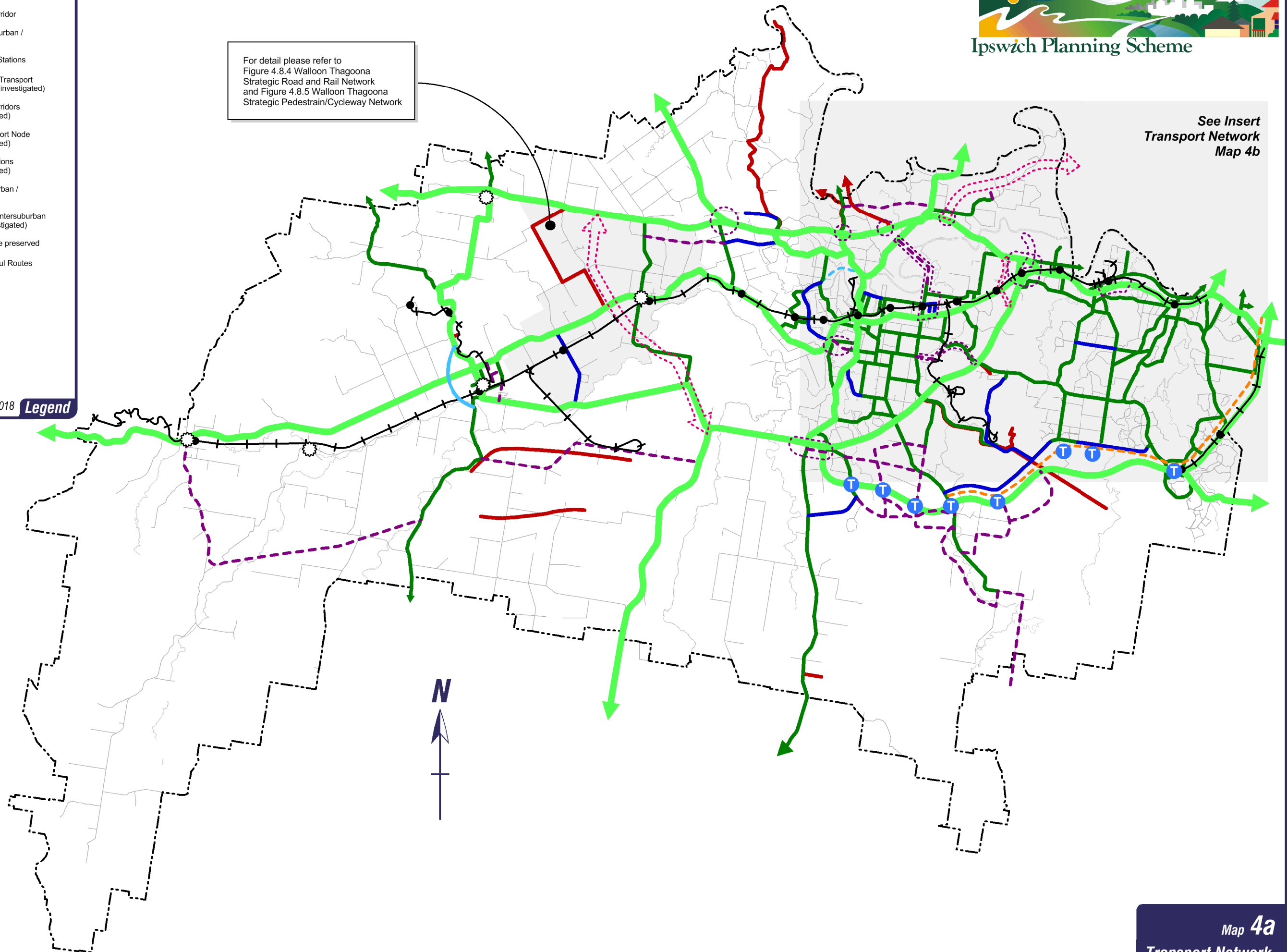


For detail please refer to
Figure 4.8.4 Walloon Thagoona
Strategic Road and Rail Network
and Figure 4.8.5 Walloon Thagoona
Strategic Pedestrian/Cycleway Network

See Insert
Transport Network
Map 4b

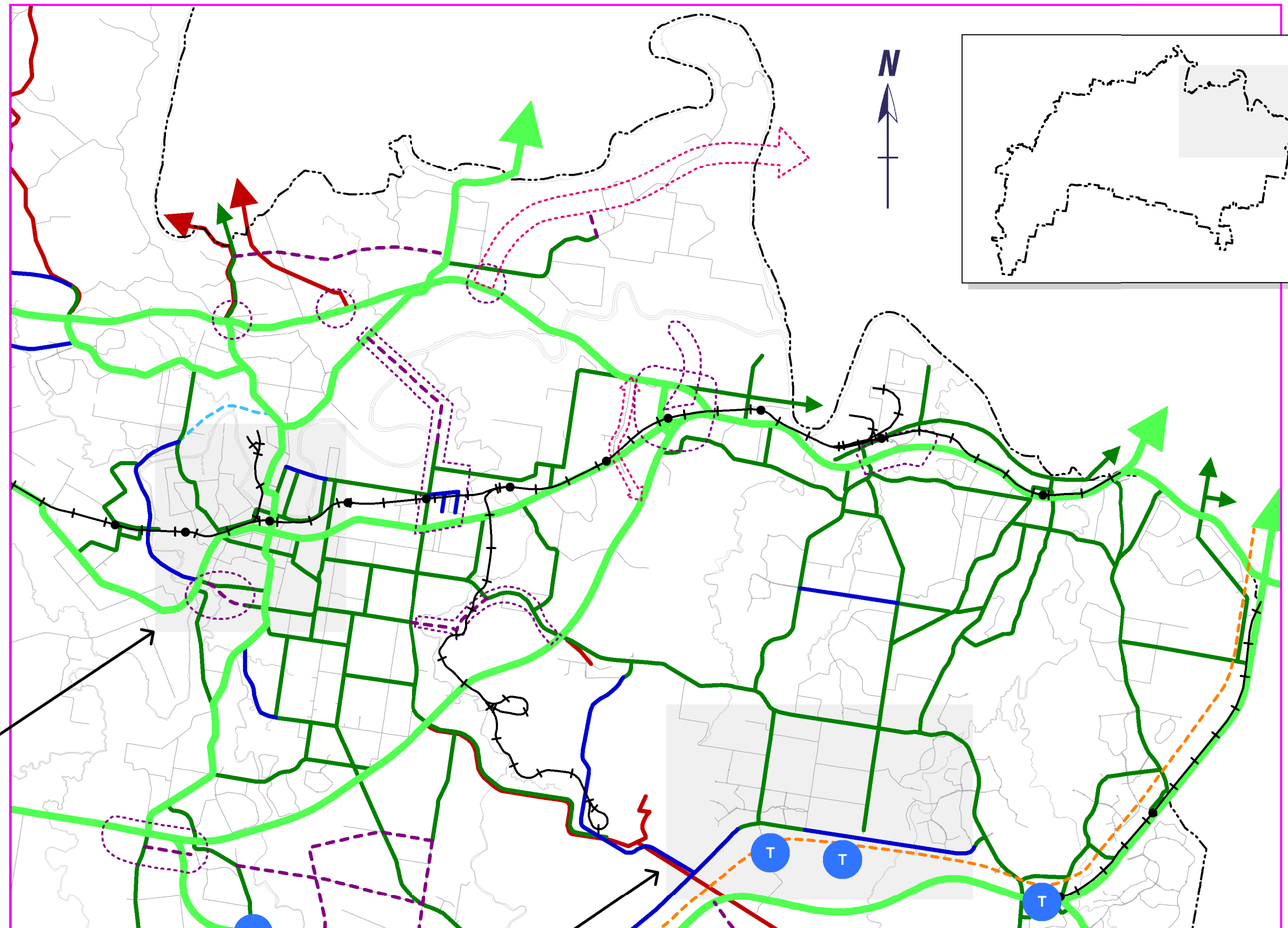
-  Existing Highway /
Regional Transport Corridor
-  Existing Major Intersuburban /
Intercommunity Links
-  Existing Railways and Stations
-  Possible Future Public Transport
Corridors (to be further investigated)
-  Regional Transport Corridors
(to be further investigated)
-  Possible Future Transport Node
(to be further investigated)
-  Intersections / Connections
(to be further investigated)
-  Future Major Intersuburban /
Intercommunity Link
-  Possible Future Major Intersuburban
Link (to be further investigated)
-  Transport Corridor to be preserved
-  Key Resource Area Haul Routes
-  Possible Link Road
(to be investigated)
-  Roads
-  Rivers
-  Township
-  City Boundary

April 2018 **Legend**



- Existing Highway / Regional Transport Corridor
- Existing Major Intersuburban / Intercommunity Links
- Existing Railways and Stations
- - - Possible Future Public Transport Corridors (to be further investigated)
- - - Regional Transport Corridors (to be further investigated)
- T Possible Future Transport Node (to be further investigated)
- - - Intersections / Connections (to be further investigated)
- Future Major Intersuburban / Intercommunity Link
- - - Possible Future Major Intersuburban Link (to be further investigated)
- - - Transport Corridor to be preserved
- Key Resource Area Haul Routes
- Possible Link Road (to be investigated)
- Roads
- ~ Rivers
- ⊙ Township
- - - City Boundary

April 2018 **Legend**



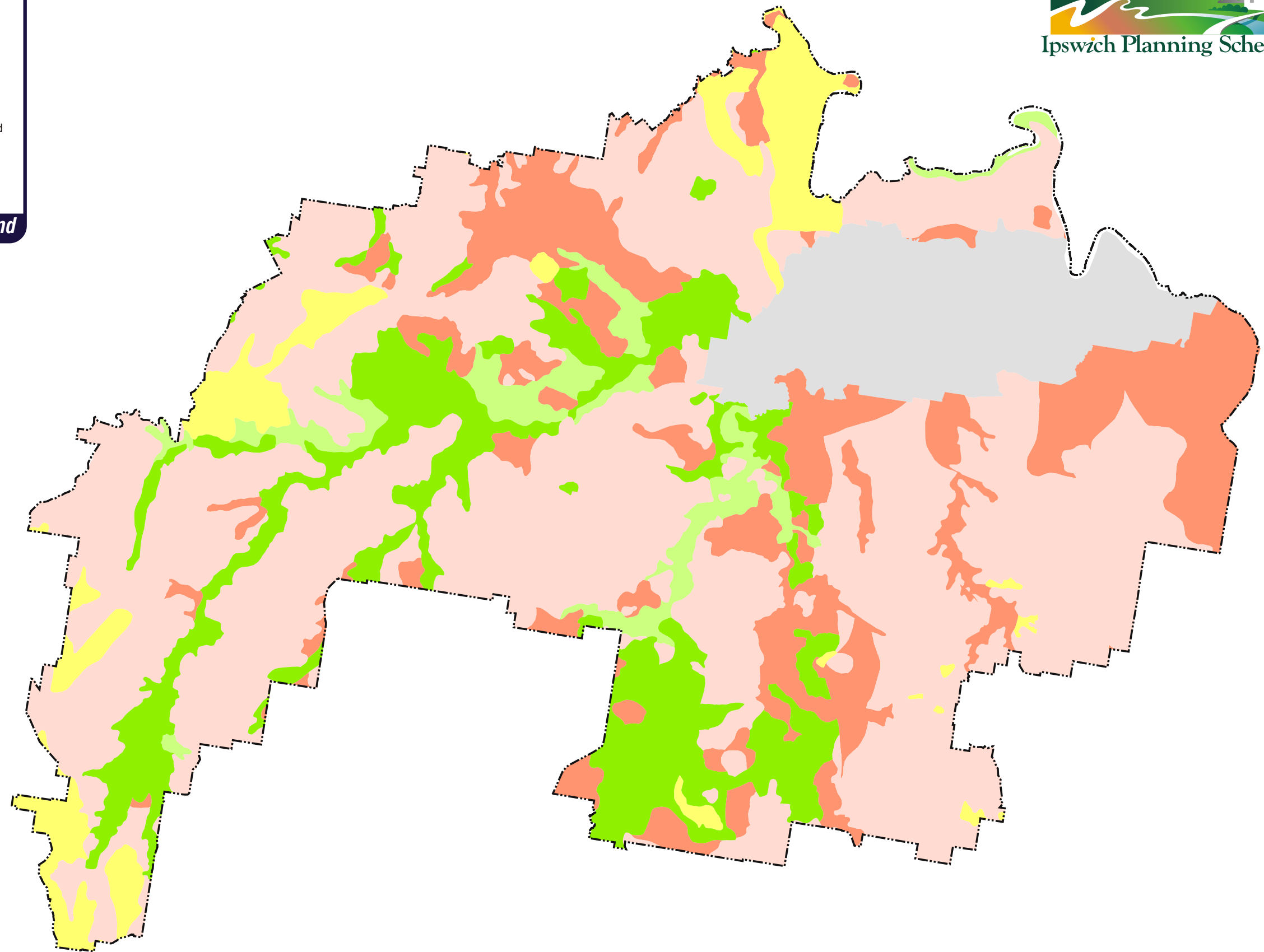
For detail please refer to Figure 5.4 Indicative Strategic Transport Network

For detail please refer to Figure 4.8.2C Strategic Road Network

- Class A - Crop Land
- Class B - Limited Crop Land*
- Class C1 - Improved Pastures
- Class C2 - Native Pastures
- Class D - Non-agricultural Land
- Urban Areas

January 2006

Legend



1. Source of Information = Ipswich City Agricultural Land Classes (DNR Updated January 1998)






2. * Class B land may include minor areas of A, C or D land. Detailed land resource assessment may be required for confirmation of agricultural land classes of each site.

3. Further details in relation to each site may be obtained from the Ipswich City Council Geographic Information System.

Notes

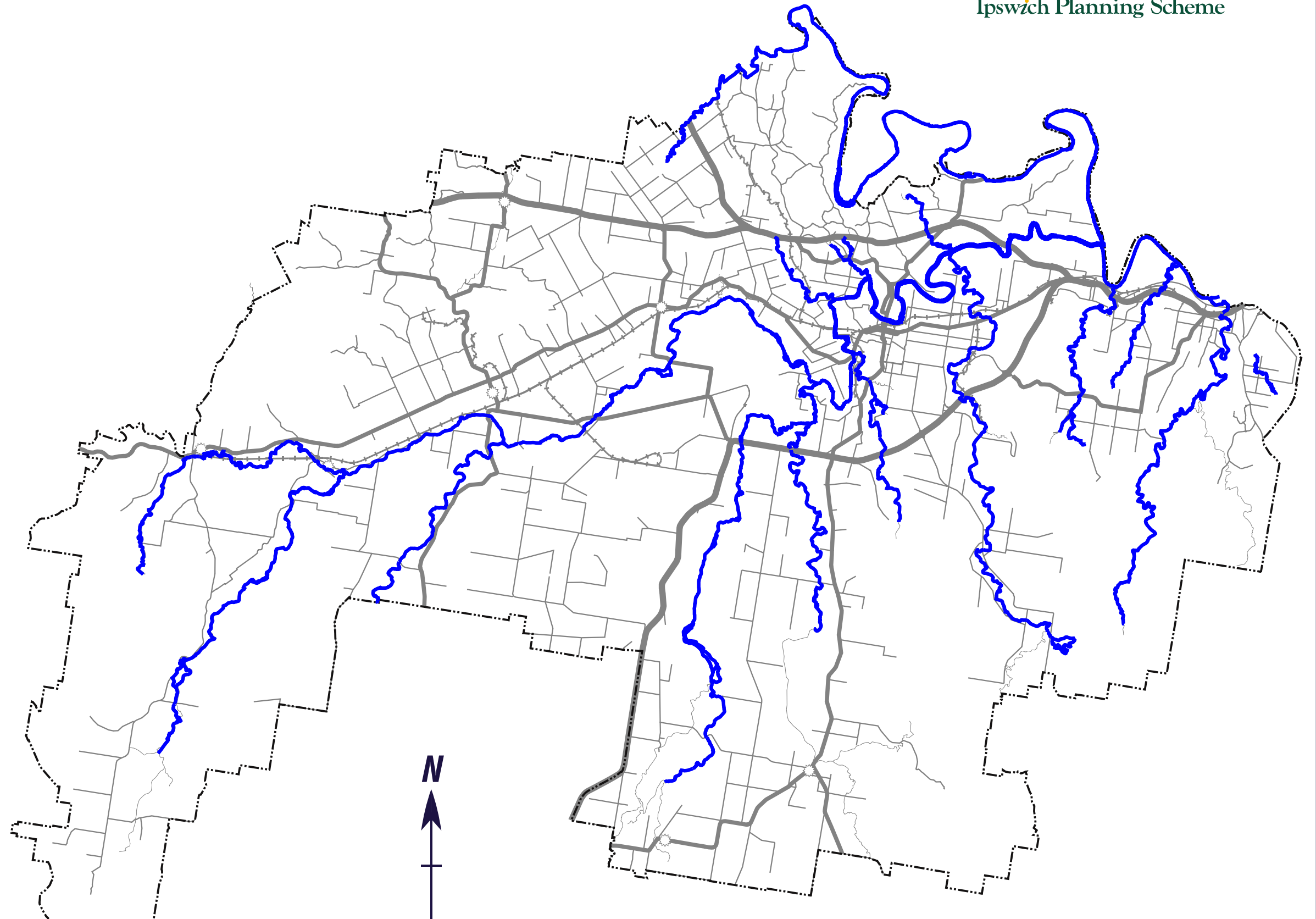
Map 5

**Rural Areas
Agricultural Land
Classes**

-  Designated Water Course
-  Highway
-  Other Major Roads
-  Roads
-  Railway

January 2006

Legend



Note:
Further details in relation to each site may be obtained from the Ipswich City Council Geographic Information System.