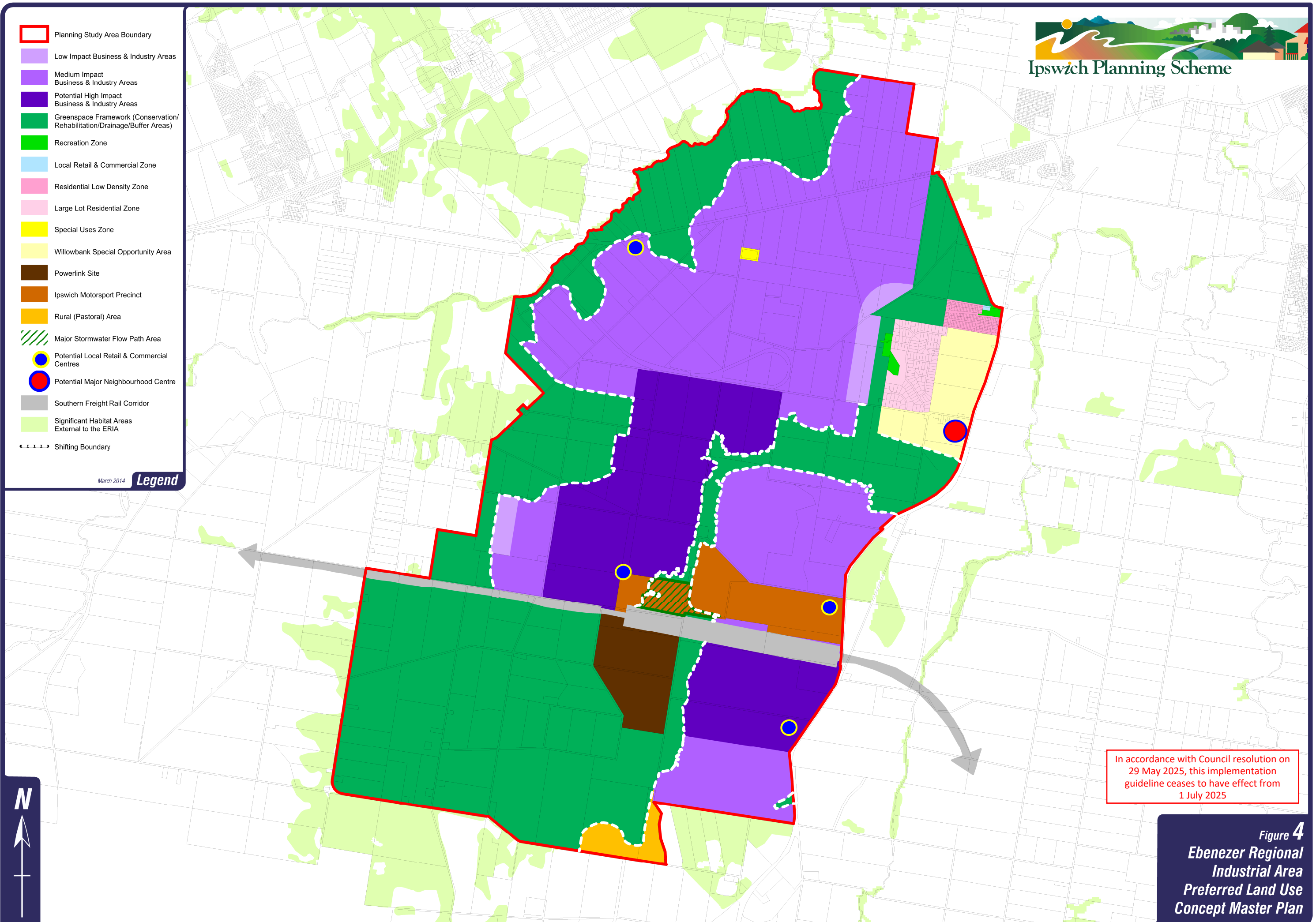


-  Planning Study Area Boundary
-  Low Impact Business & Industry Areas
-  Medium Impact Business & Industry Areas
-  Potential High Impact Business & Industry Areas
-  Greenspace Framework (Conservation/Rehabilitation/Drainage/Buffer Areas)
-  Recreation Zone
-  Local Retail & Commercial Zone
-  Residential Low Density Zone
-  Large Lot Residential Zone
-  Special Uses Zone
-  Willowbank Special Opportunity Area
-  Powerlink Site
-  Ipswich Motorsport Precinct
-  Rural (Pastoral) Area
-  Major Stormwater Flow Path Area
-  Potential Local Retail & Commercial Centres
-  Potential Major Neighbourhood Centre
-  Southern Freight Rail Corridor
-  Significant Habitat Areas External to the ERIA
-  Shifting Boundary

March 2014

### Legend



In accordance with Council resolution on 29 May 2025, this implementation guideline ceases to have effect from 1 July 2025

Figure 4  
Ebenezer Regional  
Industrial Area  
Preferred Land Use  
Concept Master Plan