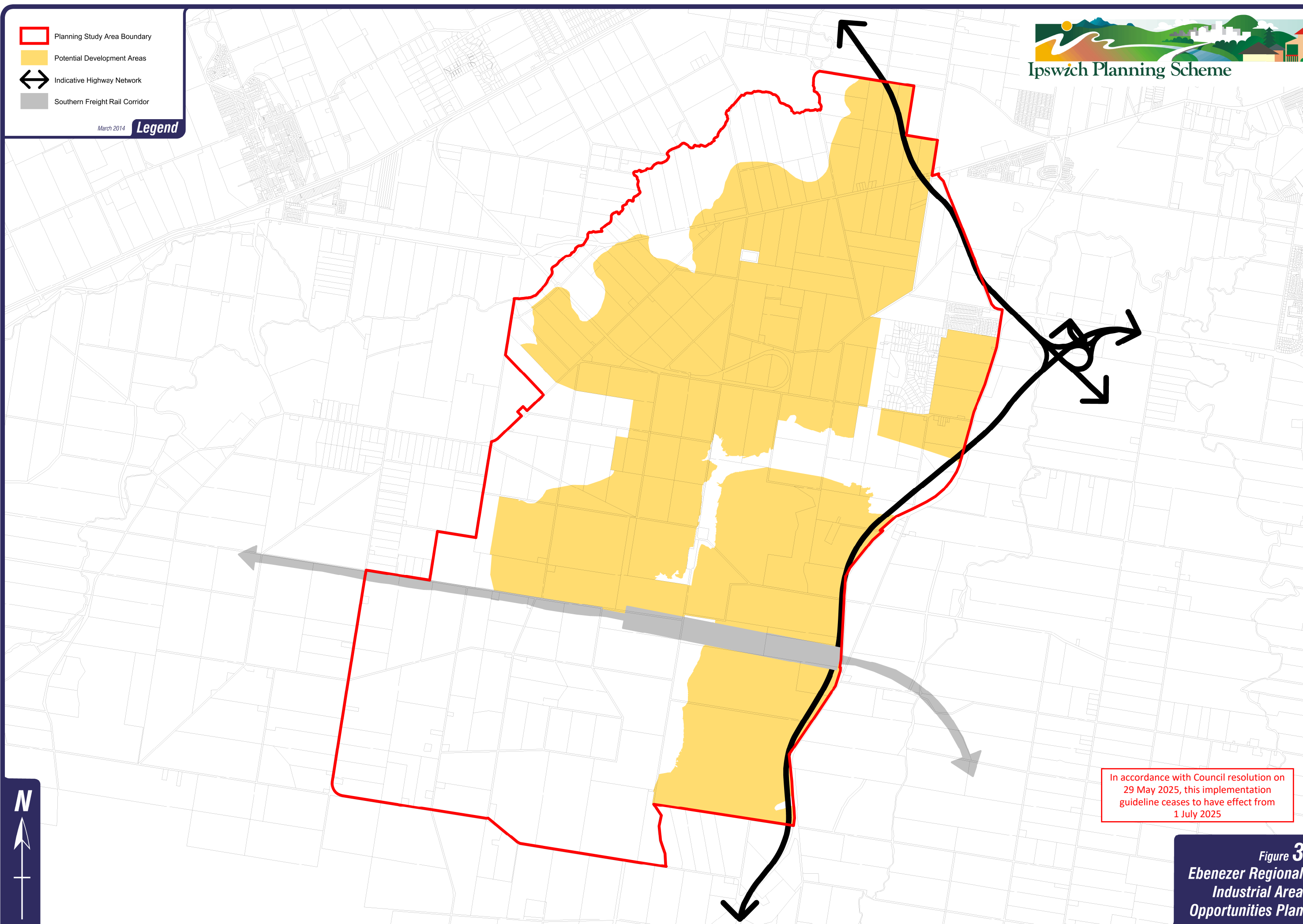


- Planning Study Area Boundary
- Potential Development Areas
- Indicative Highway Network
- Southern Freight Rail Corridor

March 2014

Legend



In accordance with Council resolution on 29 May 2025, this implementation guideline ceases to have effect from 1 July 2025

Figure 3
Ebenezer Regional
Industrial Area
Opportunities Plan